

Winter 2015 Quarterly Report

Computer Lab Management

Prepared by Tim Leamy

Computer Lab Management (CLM) operates 20 computer rooms across the UC Davis campus. These consist of 14 computer classrooms and 6 open access labs with a total of 615 installed stations. CLM also manages seven departmental computer rooms with 178 installed stations for the School of Education, the UC Davis Language Center, and The Arts Admin Group.

The demand for computer classrooms remains high and the rooms are essentially booked to capacity. We foresee additional demand due to both the 2020 Initiative and as faculty members integrate more computer-centric methods into their classroom teaching. Therefore, CLM is continuing to look for ways to add computer classrooms.

Some of the significant items from Winter 2015 include:

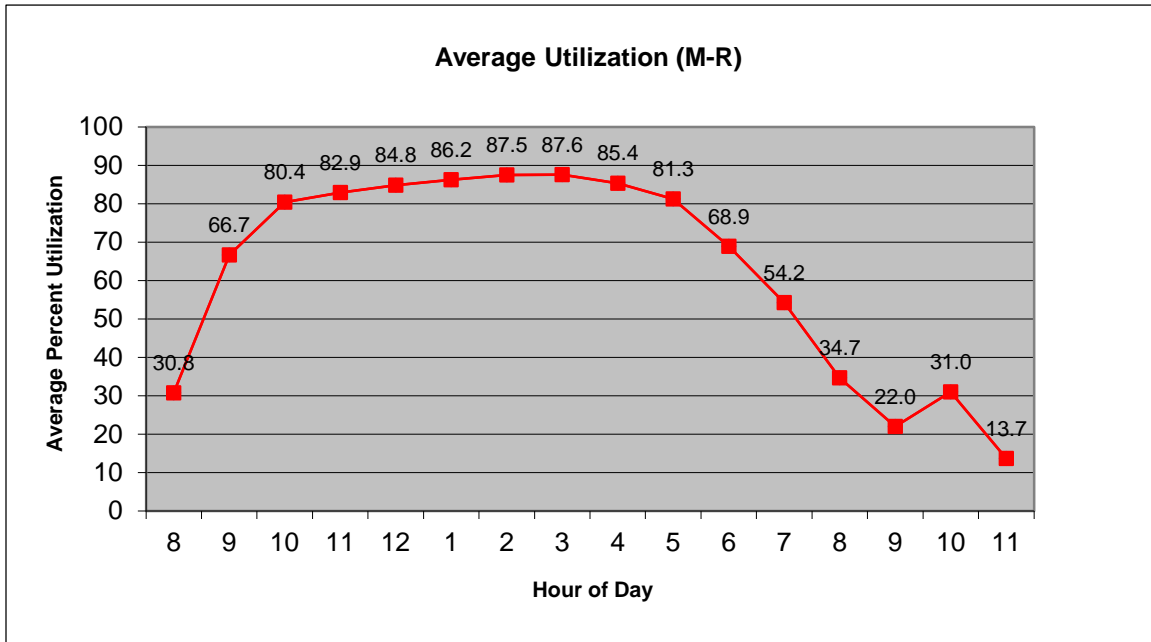
- During Winter 2015 there were 5,723 class hours reserved in the computer classrooms. This was the second highest quarterly reserved hours in CLM history after 5,861 hours in Fall 2014. CLM added two new computer classrooms in the Shields Library in Winter 2014 which caused class hours to increase dramatically.
- The number of logins has remained fairly consistent over the past few years, but is lower than the peak in 08-09. The number of unique users is slowly increasing, most likely keeping pace with the increasing number of students. The decrease in number of logins has several likely causes:
 - Increased ownership of laptops and smartphones reducing student need for accessing the computer rooms.
 - The Fall 2009 printing rate change decreased printing demand and therefore logins.
 - Increased reserved class hours reducing the time available for drop-in student use.
 - Decrease of open hours – CLM dramatically cut evening and weekend available hours in response to budget issues
- Black & white printing is continuing to decrease. The large decrease from 08-09 was due to the change in printing rates at the start of Fall 2009. The total sheets per quarter stabilized around roughly 250,000 since Fall 2013 but with a slight downward trend. This might be due to faculty moving to electronic assignment submission or students becoming more cost conscious about printing.
- CLM installed Rapid 5080 electronic staplers in all remaining computer classrooms (1, 21 & 27 Olson; 73, 75 & 93 Hutchison; 2102 & 2013 SCC). Most of our classrooms had the staplers so we added them to the rest to be consistent for classes.
- CLM conducted a student survey about computer room use. The results are posted at <http://clm.ucdavis.edu/pubs/survey/student-w15.html>.

Statistical Summary

Utilization

Overall Computer Room Utilization

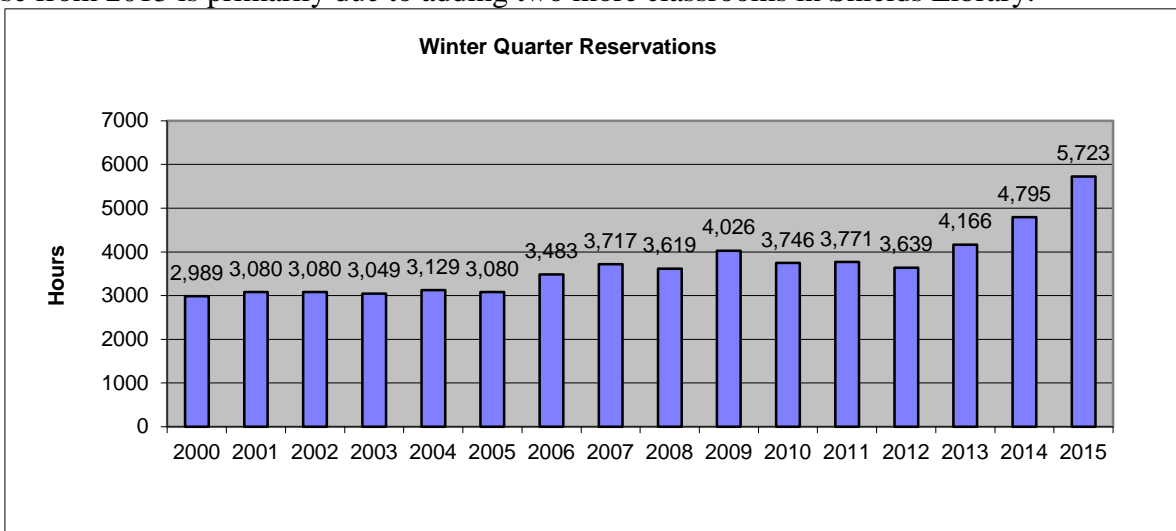
Computer Lab Management operates 20 computer rooms at UC Davis. These computer rooms experience high utilization during peak hours (10:00 am to 6:00 pm). Most open access labs also experience wait lines. The graph below combines utilization Monday through Thursday.



Utilization shows the general trend of high usage from 10am to 6pm continued this quarter. Several of the open access labs also experience wait lines during peak periods. The maximum wait line was 22 people waiting for a computer on March 12th.

Class Use

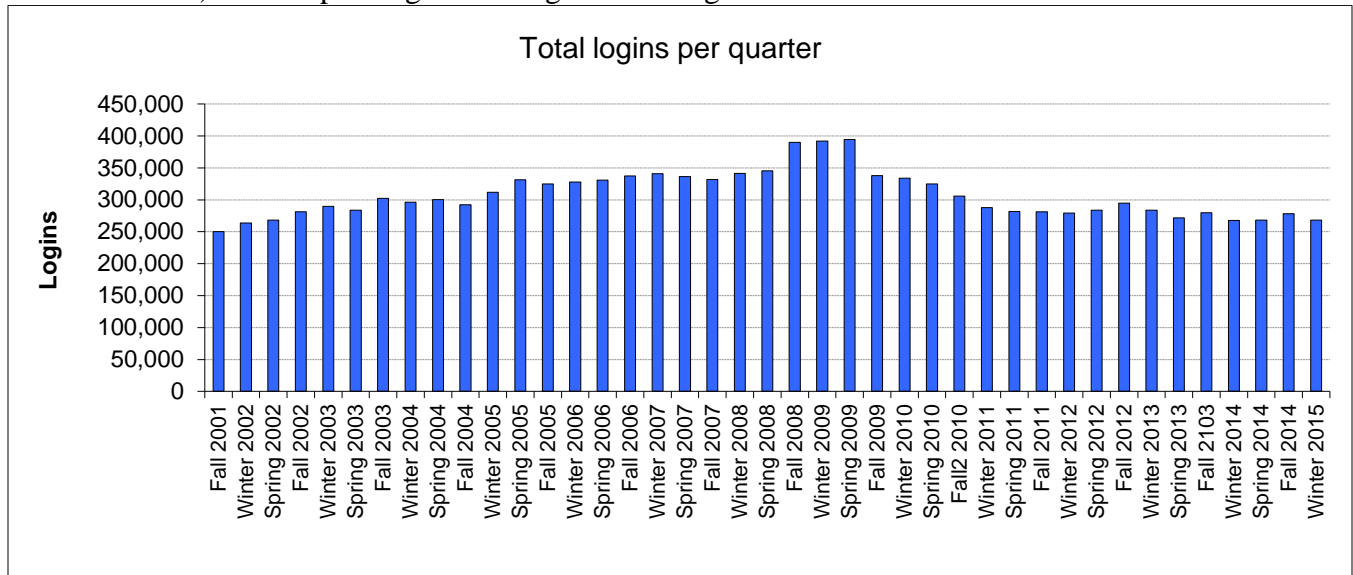
During Winter 2015 there were 5,723 class hours reserved in the computer classrooms. The large increase from 2013 is primarily due to adding two more classrooms in Shields Library.



In addition, there were 255 class software installs and 171 class folders created during Winter 2015.

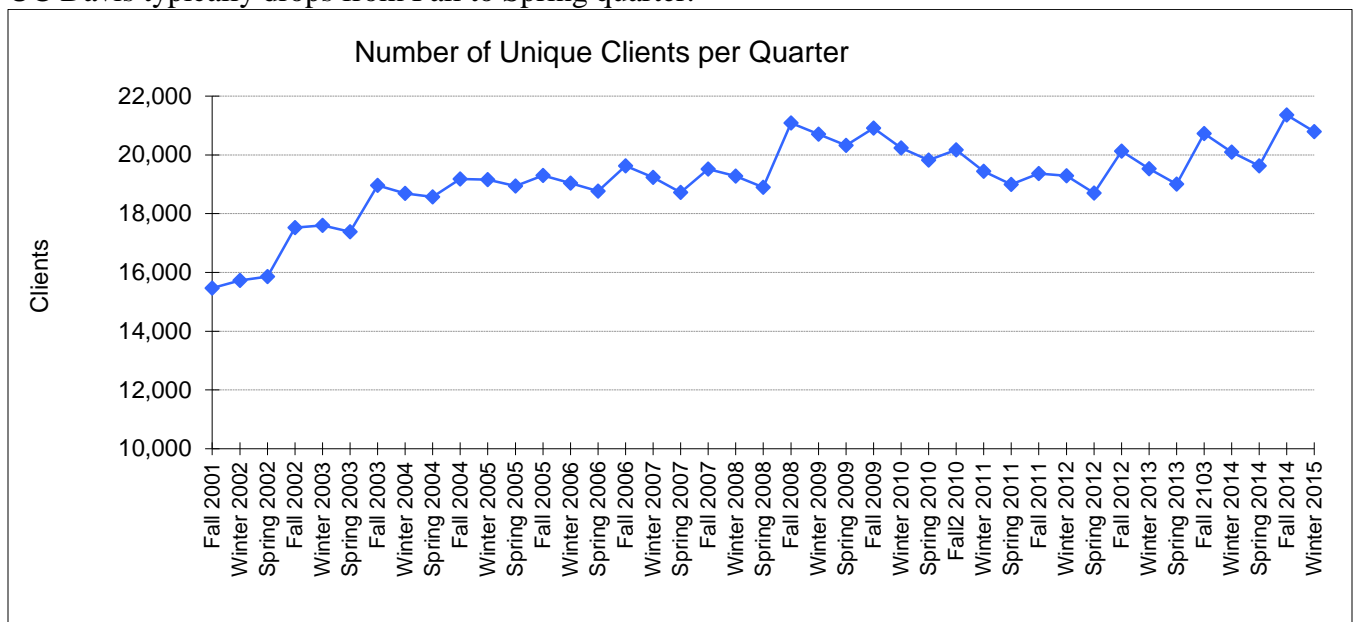
Number of Logins and Users

The total logins in Winter 2015 decreased slightly to 268,039, a 3.7% drop from Fall 2014. The number of logins has dropped from 08-09, most likely due to a combination in the decrease of open hours (17% from Fall 2008) and the printing rate change decreasing demand.



Unique Users

The number of unique clients decreased to 20,795 in Winter 2015. Of these, 20,241 were students. This is a decrease of 563 clients from Fall 2014. The decrease is normal as the total number of students at UC Davis typically drops from Fall to Spring quarter.

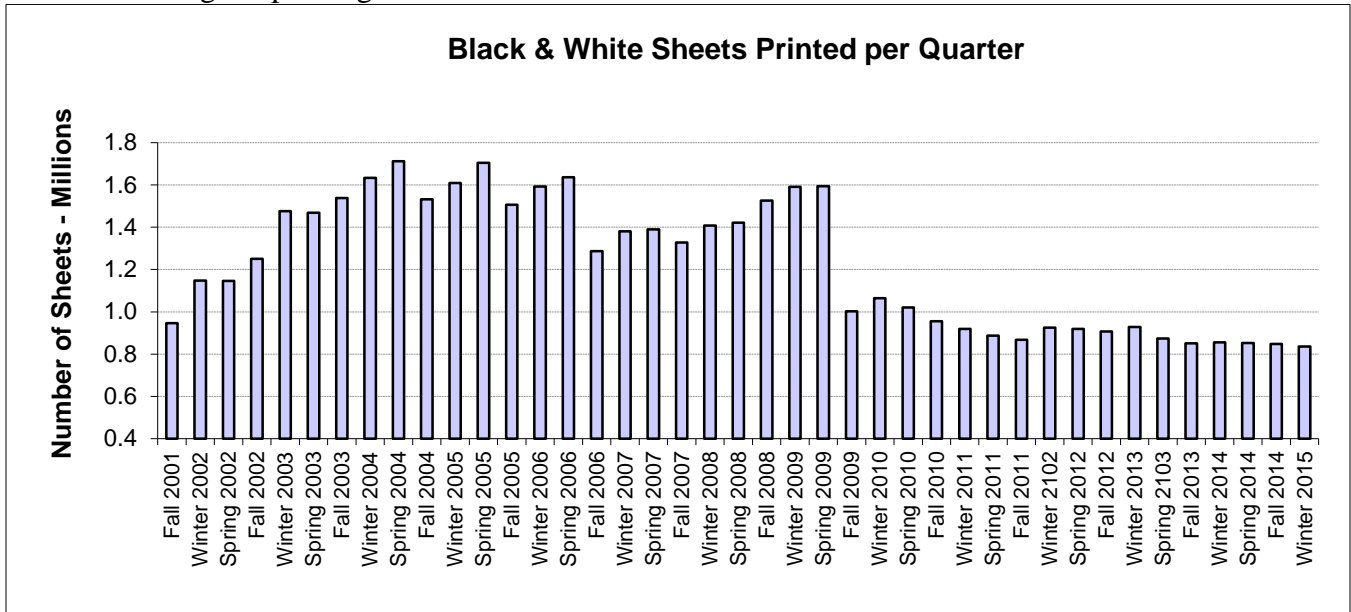


Virtual Lab Users

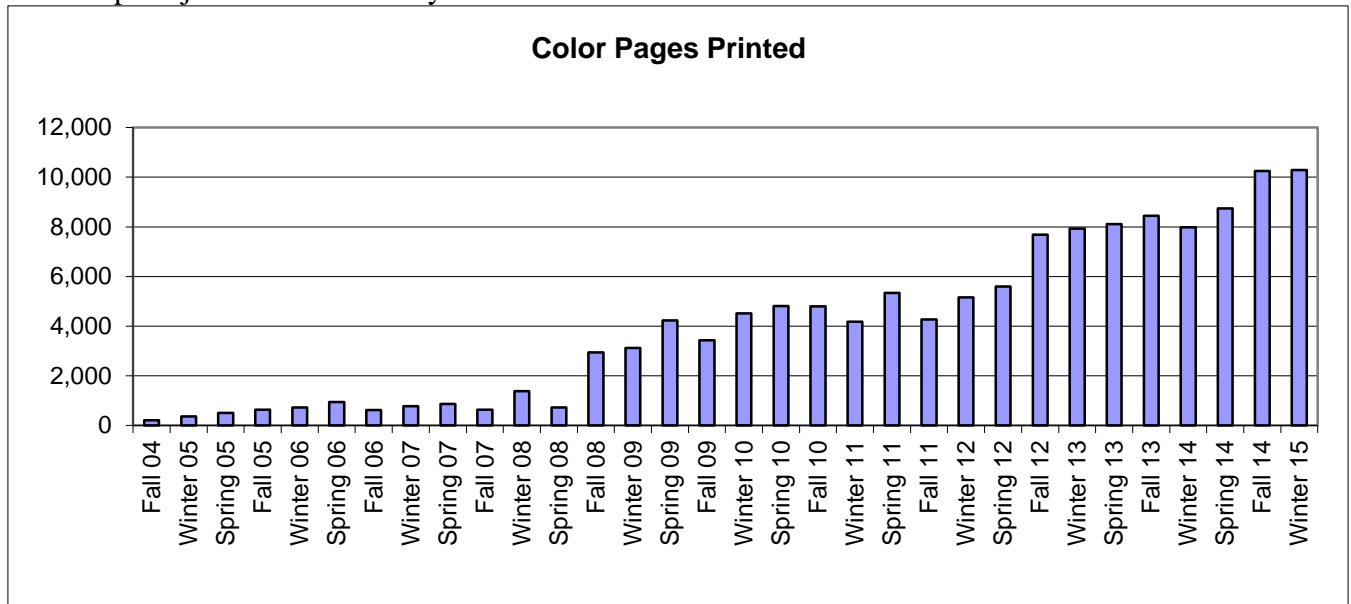
The IET Virtual Lab was used 6,147 times by 932 unique clients. This service was started in Summer 2012 and has averaged 6,276 logins per quarter since Fall 2012. CLM expects the number of users to slowly increase as more students and faculty become aware of the service.

Printing

There were 835,823 total sheets printed in Winter 2015, an decrease of 2.4% from Fall 2014. The average sheets printed per client (of those who printed) was 50.81. The large decrease from 08-09 was due to the change in printing rates at the start of Fall 2009.



There were 7,975 color pages printed, a slight increase of 0.4% from Fall 2014. This is largest number of color print jobs in CLM history.



There were 3,920 wireless print jobs, an increase of 521 from Fall 2014. There were 485 unique clients who printed through the wireless printing system.

