

Winter 2014 Quarterly Report

Computer Lab Management

Prepared by Tim Leamy

Computer Lab Management (CLM) operates 20 computer rooms across the UC Davis campus. These consist of 14 computer classrooms and 6 open access labs with a total of 615 installed stations. CLM also manages four departmental computer rooms with 111 installed stations for the School of Education and the Language Learning Center.

The demand for computer classrooms remains high and the rooms are essentially booked to capacity. We foresee additional demand due to the 2020 Initiative and as faculty members integrate more computer-centric methods into their classroom teaching. Therefore, CLM is continuing to look for ways to add computer classrooms.

Some of the significant items from Winter 2014 include:

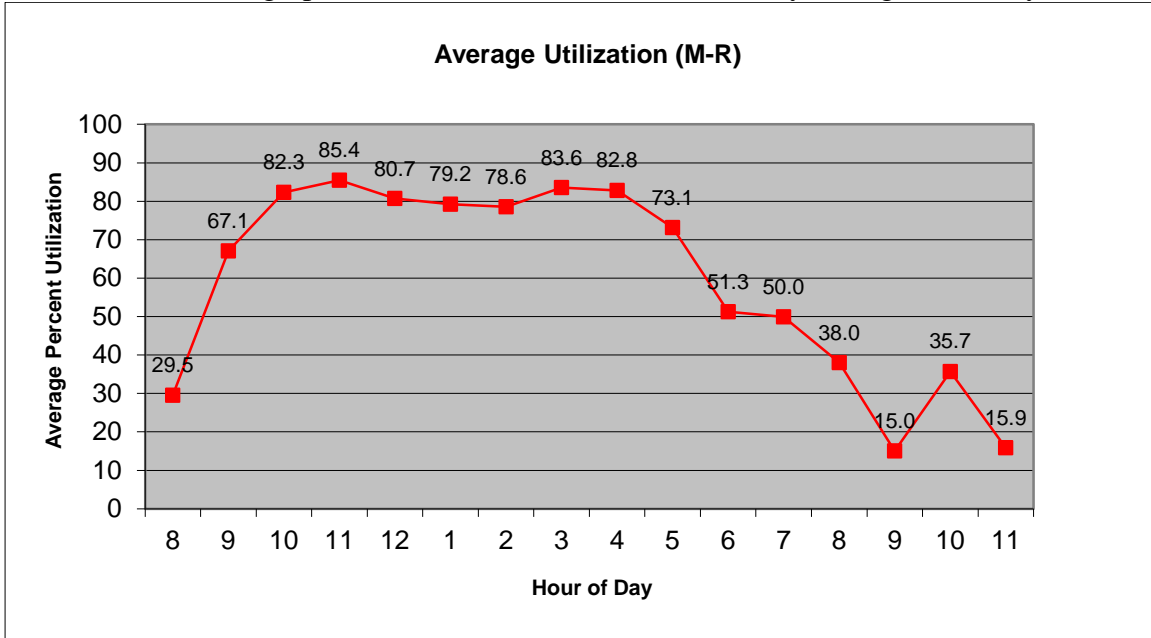
- CLM opened two new Mac computer classrooms the basement of Shields Library. 90A Shields contains 28 computers and 90B Shields contains 31 computers. Both rooms are equipped with Mac Minis with an Intel Core i5 2.5GHz processor, 4GB RAM, 500GB hard drive & 20" widescreen flat panel monitor; a black and white printer; and projection system with touch screen controller.
The new classrooms were built to address large waitlists for classes that meet the upper-division writing requirement. The rooms were scheduled for 475 hours of classes in Winter 2014 and currently 702 hours in Spring 2014.
- CLM starting planning and preparation to take on management of the Arts Group's three computer rooms (Design, Art and Cinema & Technoculture) in Summer 2014. This will add roughly 75 computers to CLM's management.
- During Winter 2014 there were 4,794.5 class hours reserved in the computer classrooms. This was the highest quarterly reserved hours in CLM history. The increase was largely due to opening the new computer classrooms in 90A and 90B Shields.
- The number of logins and sheets printed are lower this academic year versus 2012-13. The drop is partially attributable to the move from 177 MU to 102 Wellman in Fall 2013. The usage and printing in 102 Wellman is lower than it was in 177 MU.
- CLM conducted a student survey about computer room use. The results are posted at <http://clm.ucdavis.edu/pubs/survey/student-w14.html>.

Statistical Summary

Utilization

Overall Computer Room Utilization

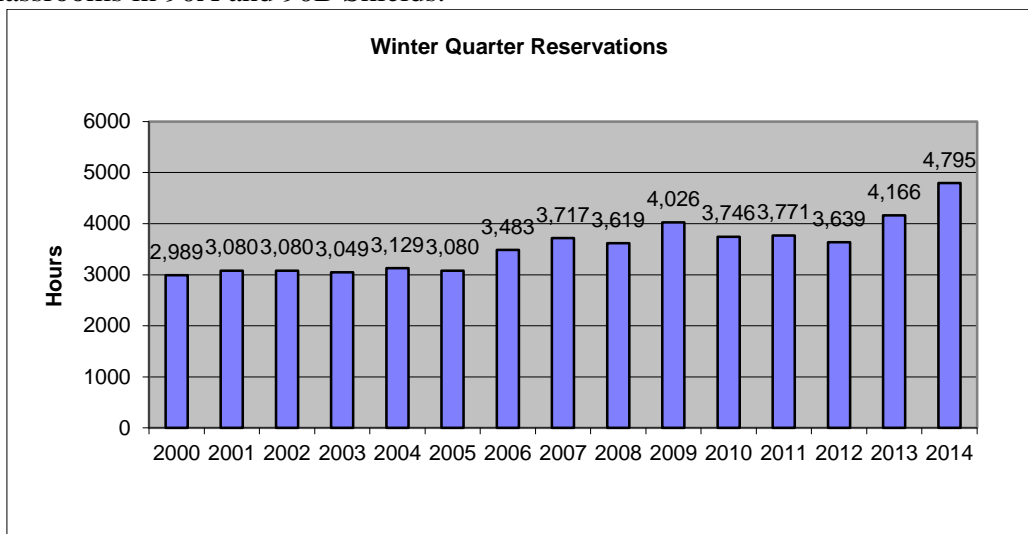
Computer Lab Management operates 20 computer rooms at UC Davis. These computer rooms experience high utilization during peak hours (10:00 am to 5:00 pm). Most open access labs also experience wait lines. The graph below combines utilization Monday through Thursday.



Utilization shows the general trend of high usage from 10am to 5pm continued this quarter. Several of the open access labs also experience wait lines during peak periods. The maximum wait line was 24 people waiting for a computer on March 17th.

Class Use

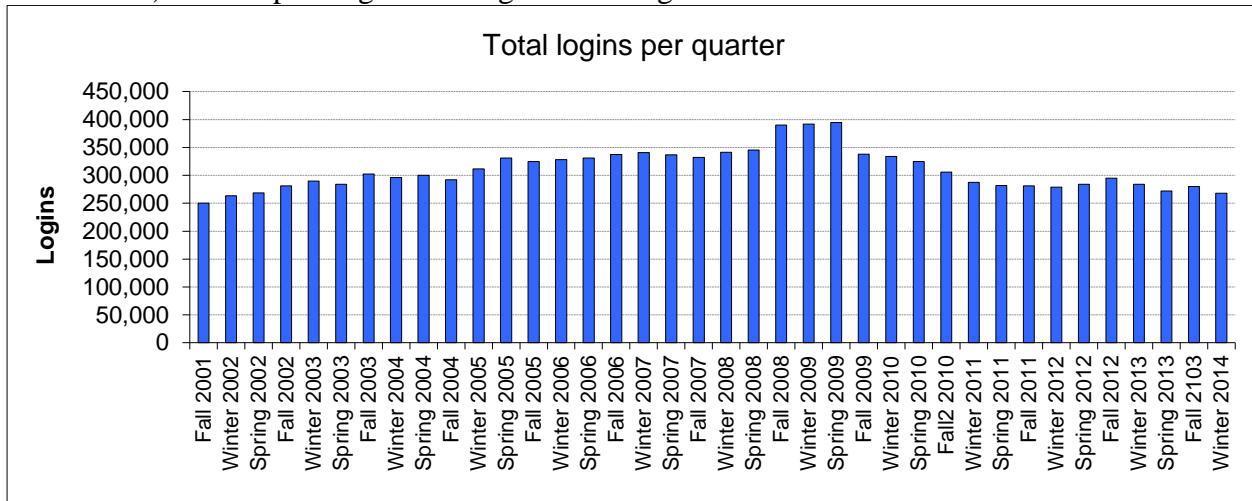
During Winter 2014 there were 4,794.5 class hours reserved in the computer classrooms. This was the highest quarterly reserved hours in CLM history. The increase was largely due to opening the new computer classrooms in 90A and 90B Shields.



In addition, there were 237 class software installs and 124 class folders created during Winter 2014.

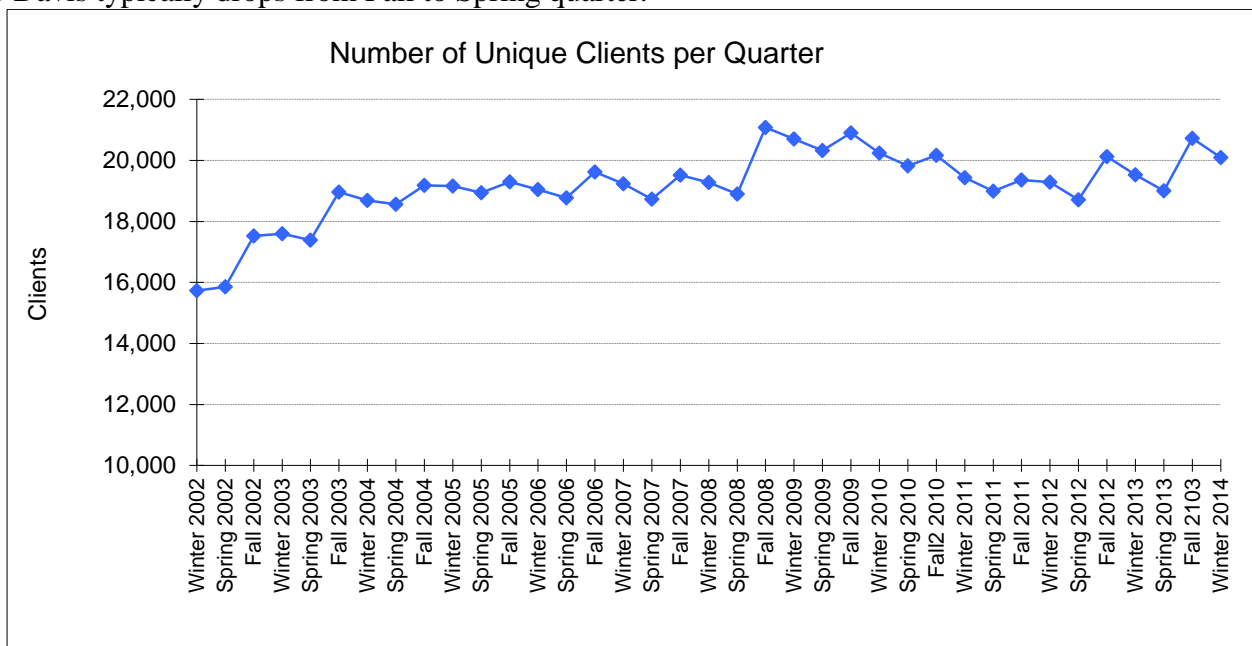
Number of Logins and Users

The total logins in Winter 2014 decreased slightly to 267,667, a 4.3% drop from Fall 2013. The number of logins has dropped from 08-09, most likely due to a combination in the decrease of open hours (17% from Fall 2008) and the printing rate change decreasing demand.



Unique Users

The number of unique clients decreased to 20,097 in Winter 2014. Of these, 19,537 were students. This is a decrease of 629 clients from Fall 2013. The decrease is normal as the total number of students at UC Davis typically drops from Fall to Spring quarter.

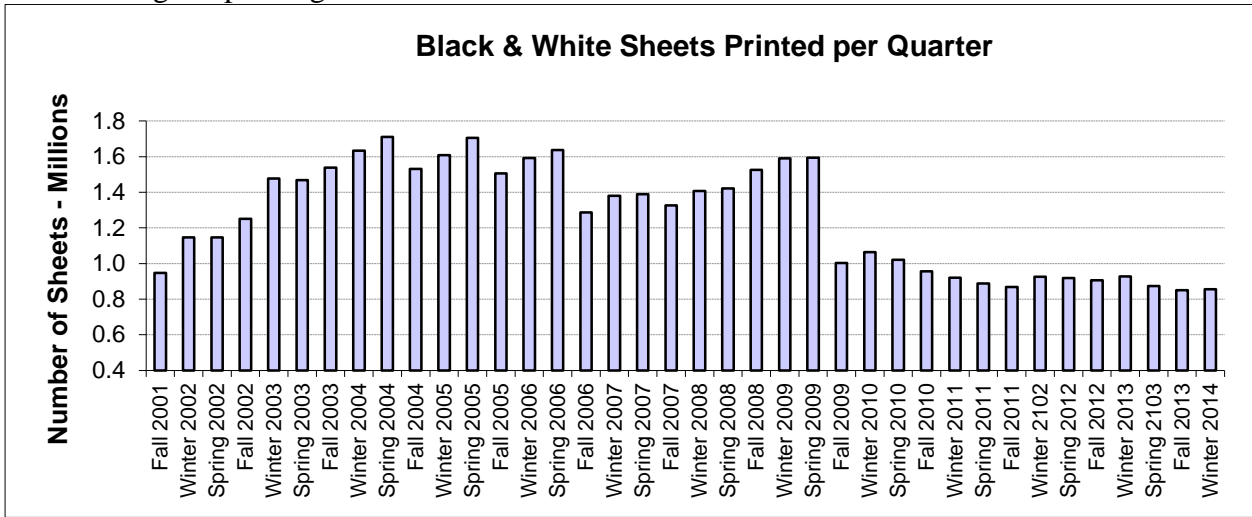


Virtual Lab Users

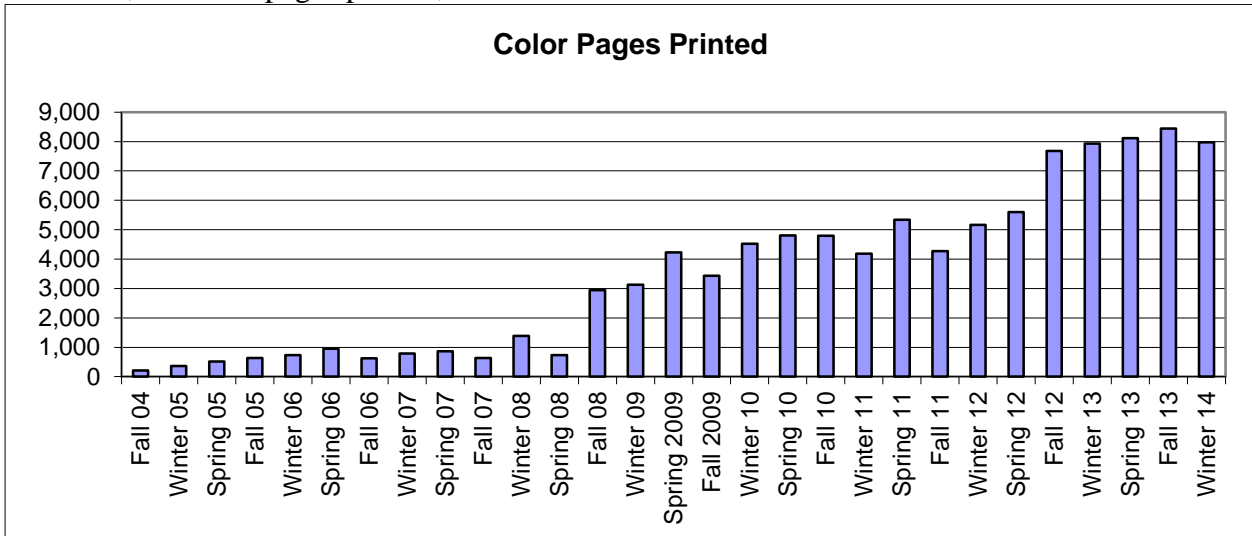
The IET Virtual Lab was used 7,347 times by 972 unique clients. This service was started in Summer 2012 and has averaged 5,901 logins per quarter since Fall 2012. CLM expects the number of users to slowly increase as more students and faculty become aware of the service.

Printing

There were 856,241 total sheets printed in Winter 2014, an increase of 0.7% from Fall 2013. The average sheets printed per client (of those who printed) was 50.81. The large decrease from 08-09 was due to the change in printing rates at the start of Fall 2009.



There were 7,975 color pages printed, a decrease of 5.5% from Fall 2013.



There were 2,941 wireless print jobs, an increase of 555 from Fall 2013. There were 388 unique clients who printed through the wireless printing system.

