

Winter 2013 Quarterly Report

Computer Lab Management

Prepared by Tim Leamy

Computer Lab Management (CLM) operates 18 computer rooms across the UC Davis campus. These consist of 12 computer classrooms and 6 open access labs with a total of 558 installed stations. CLM also manages 3 computer rooms with 77 installed stations for the Language Learning Center.

The demand for computer classrooms remains high and the rooms are essentially booked to capacity. We foresee additional demand due to the 2020 Initiative and as faculty members integrate more computer-centric methods into their classroom teaching. Therefore, CLM is continuing to look for ways to add computer classrooms.

Some of the significant items from Winter 2013 include:

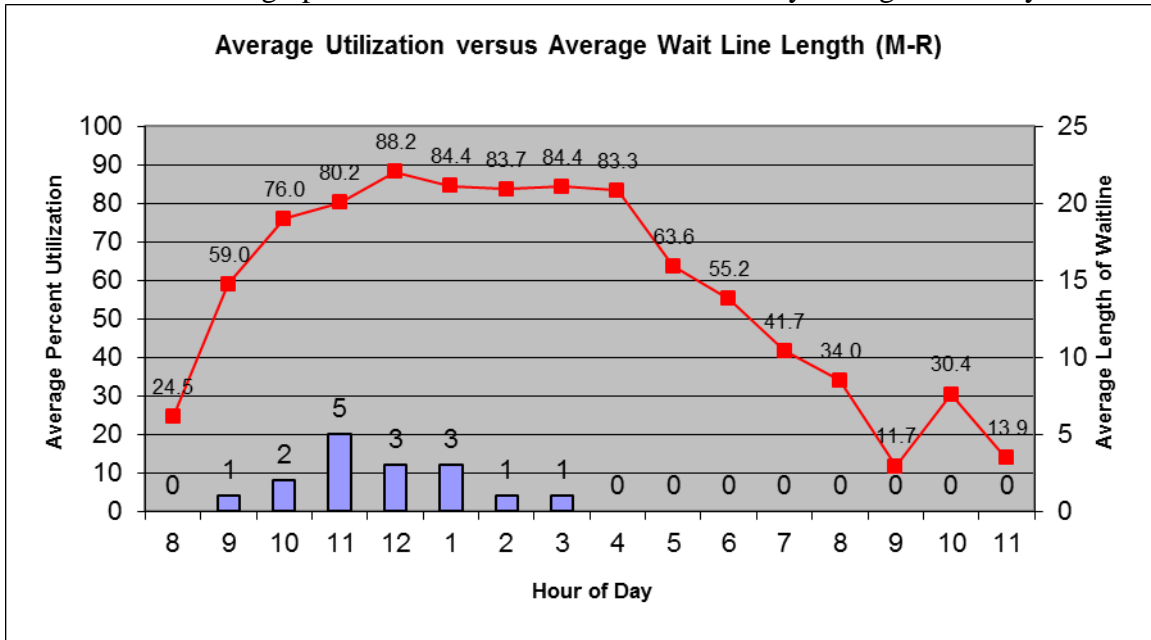
- During Winter 2013 there were 4,166.25 class hours reserved in the computer classrooms. This total is down slightly from the 4,238.25 hours in Fall 2012, but is the second highest reserved hours in CLM history. The increase from previous years is due to departments fully utilizing the additional computer classroom CLM opened in the SCC during Winter 2012. Since class scheduling typically occurs three quarters in advance, the full effect of adding a classroom wasn't felt until Fall 2012.
- CLM managed three computer rooms for the Language Learning Center (LLC). There were 8,408 logins by 1,426 unique people in the LLC computer rooms.
- There were 928,453 total sheets printed in Winter 2013, an increase of 2.4% from Fall 2012. There was a large decrease in printing from 08-09 due to the change in printing rates at the start of Fall 2009. However, over the past year it appears the amount of printing has stabilized at roughly 915,000 sheets per quarter.
- There were 7,934 color pages printed. The large increase from previous years was due to adding color printers to the computer labs in 177 MU and 182 Shields over Summer 2012.
- Use of the IET Virtual Lab continued to increase. It was used 7,127 times by 770 unique clients. The number of logons increased by 34.6% over Fall 2012. CLM expects the number of users to increase as more students and faculty become aware of it.
- CLM conducted a student survey about computer room use. The results are posted at <http://clm.ucdavis.edu/pubs/survey/student-w13.html>.

Statistical Summary

Utilization

Overall Computer Room Utilization

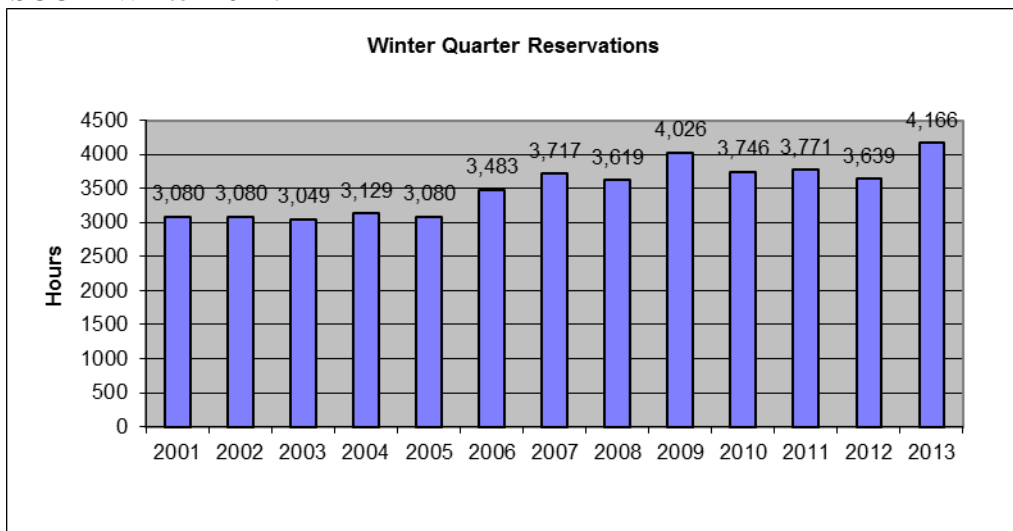
Computer Lab Management operates 18 computer rooms at UC Davis. These computer rooms experience high utilization during peak hours (10:00 am to 5:00 pm). Most open access labs also experience wait lines. The graph below combines utilization Monday through Thursday.



Utilization shows the general trend of high usage from 10am to 5pm continued this quarter. The wait line data in the graph is the average wait line for the entire quarter. The maximum wait line length of 28 on March 11th is many times the average.

Class Use

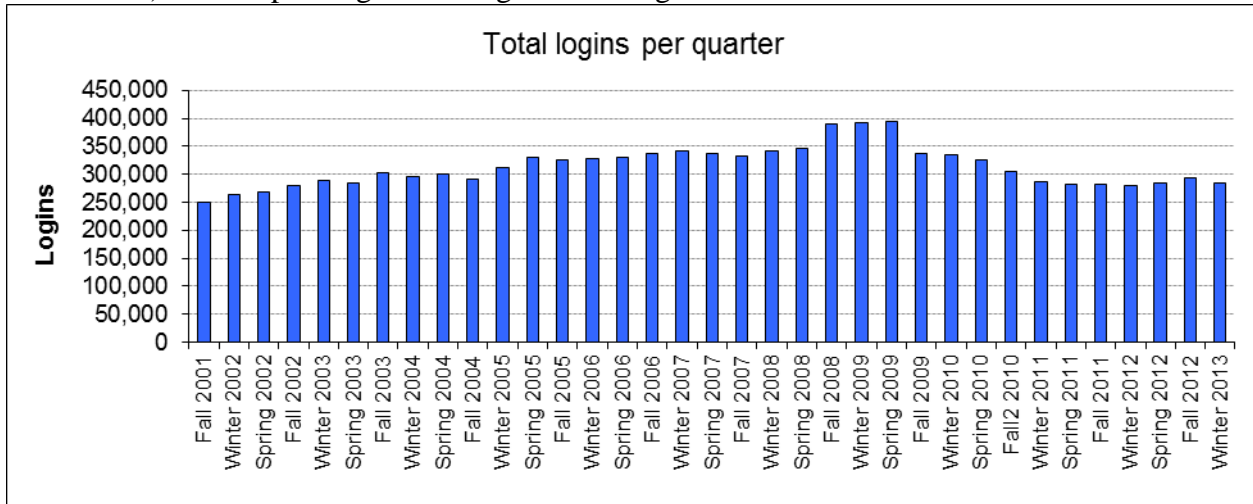
During Winter 2013 there were 4,166.25 class hours reserved in the computer classrooms. This total is down slightly from the 4,238.25 hours in Fall 2012, but is the second highest reserved hours in CLM history. This increase of reserved hours is due to adding a new computer classroom during the move from Hart to SCC in Winter 2012.



In addition, there were 219 class software installs and 103 class folders created during Winter 2013.

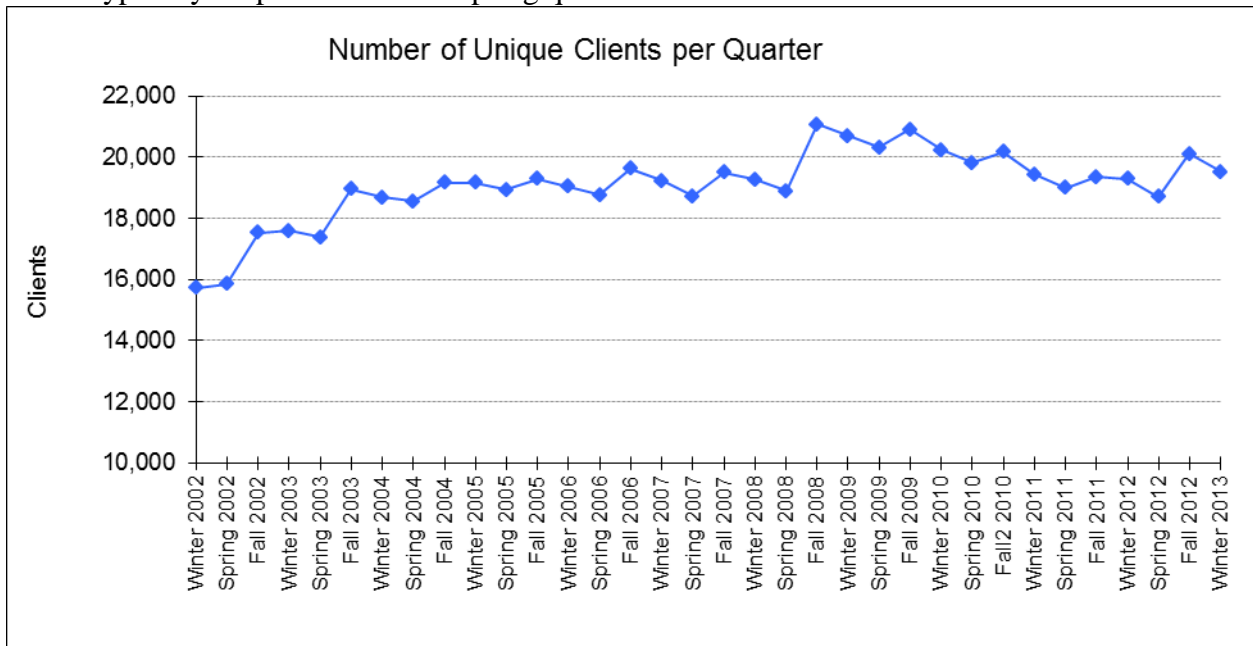
Number of Logins and Users

The total logins in Winter 2013 decreased slightly to 283,939, a 3.6% drop from Fall 2012. The number of logins has dropped from 08-09, most likely due to a combination in the decrease of open hours (17% from Fall 2008) and the printing rate change decreasing demand.



Unique Users

The number of unique clients decreased to 19,524 in Winter 2013. Of these, 18,950 were students. This is a decrease of 599 clients from Fall 2012. The decrease is normal as the total number of students at UC Davis typically drops from Fall to Spring quarter.

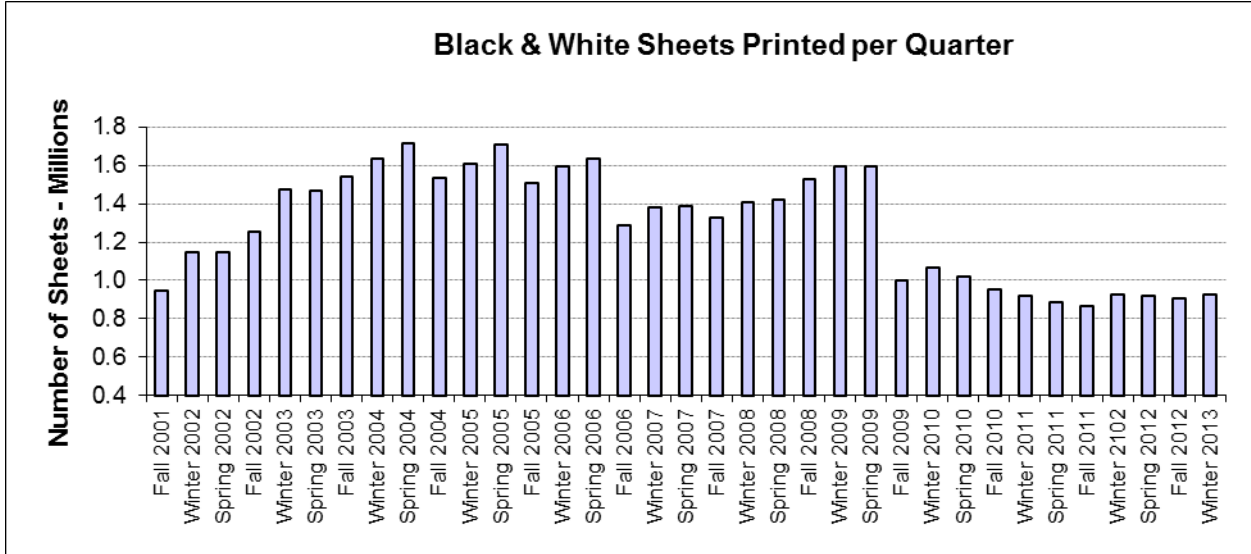


Virtual Lab Users

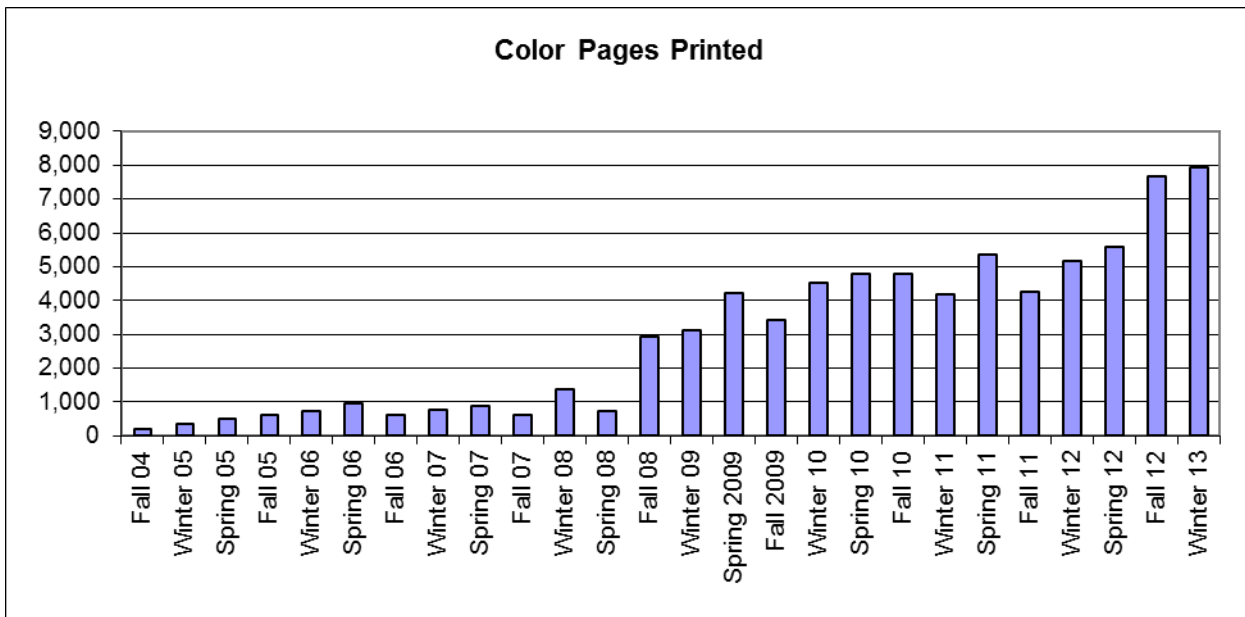
The IET Virtual Lab was used 7,127 times by 770 unique clients. The number of logons increased by 34.6% over Fall 2012. This service was started in Summer 2012 so CLM expects the number of users to increase as more students and faculty become aware of it.

Printing

There were 928,453 total sheets printed in Winter 2013, an increase of 2.4% from Fall 2012. The average sheets printed per client (of those who printed) was 56.52. The large decrease from 08-09 was due to the change in printing rates at the start of Fall 2009. We expect the total sheets printed and average sheets per client to eventually stabilize as students become accustomed to the new rate and realize that printing is still relatively inexpensive.



In addition, there were 7,934 color pages printed, an increase of 256 from Fall 2012. The large increase from previous years was due to adding color printers to the computer rooms in 177 MU and 182 Shields over Summer 2012.



There were 1,321 wireless print jobs, an increase of 233 from Fall 2012. There were 229 unique clients who printed through the wireless printing system.

