

# Fall 2021 Quarterly Report

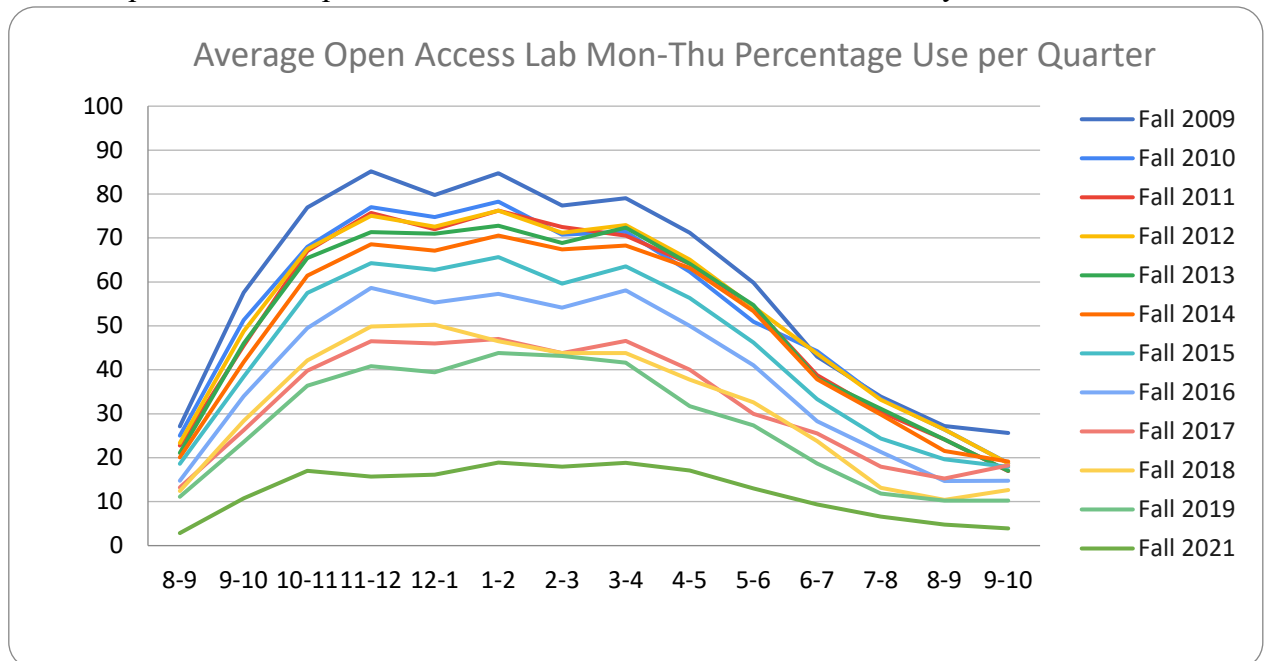
## Computer Lab Management

Prepared by Tim Leamy

Computer Lab Management (CLM) operates 20 computer rooms across the UC Davis campus. These consist of 15 computer classrooms and 5 open access labs with a total of 615 installed stations. CLM also manages eight departmental computer rooms with 170 installed stations for the UC Davis Language Center and The Arts Admin Group.

Some of the significant items from Fall 2021 include:

- Campus reopened after a long COVID closure. While classroom use mostly rebounded, open-access use dropped dramatically:
  - Classroom reservations were roughly consistent after accounting for classes going remote due to COVID. (6,890 hours in Fall 2019 to 6,463 hours in Fall 2021).
  - Total logins in classrooms dropped a bit (64,012 in Fall 2019 to 40,502 in Fall 2021). But logins in open-access labs dropped by almost 80% (107,898 to 23,490).
  - The open-access lab percent utilization was the lowest in CLM history



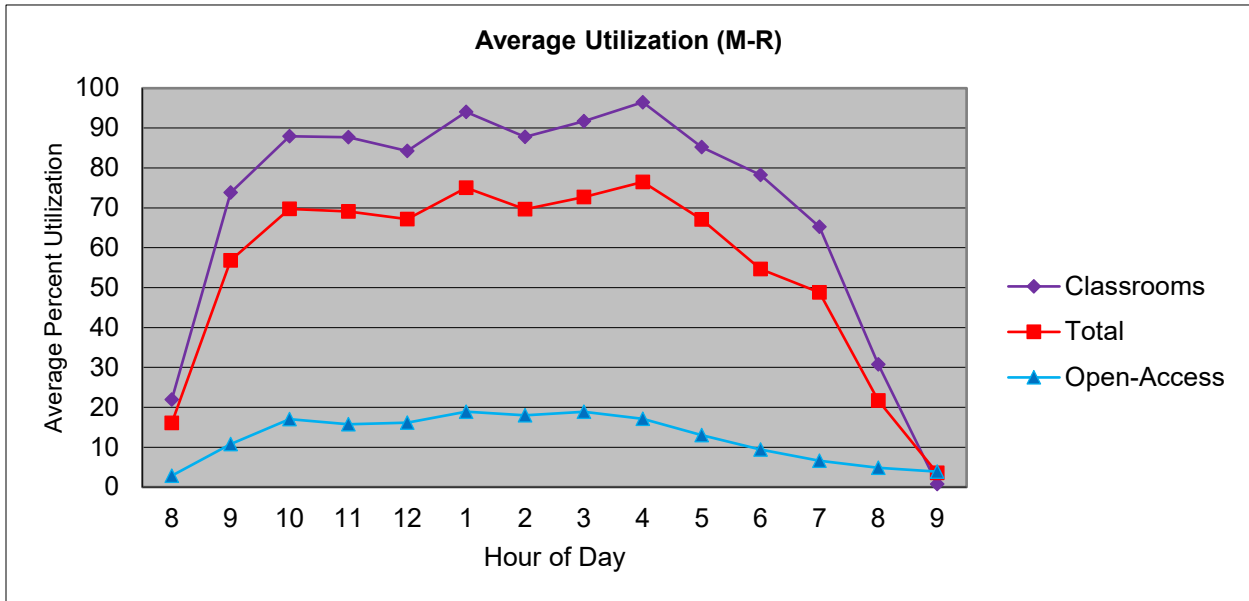
- Printing dropped drastically from 559,962 sheets in Fall 2019 to 172,543 sheets in Fall 2021.
- It is unclear if these usage changes are due to COVID keeping students away from campus or long term changes. Most likely it's a combination. We'll need to watch usage trends to determine how to adjust service levels to match needs going forward.
- The wireless printing service saw a huge increase in use (4,498 wireless print jobs in Fall 2019 to 20,531 in Fall 2021). The increase is likely due to the self-serve wireless printing added to the MU Lounge and Shields Basement over Summer 2021.
- CLM upgrade several significant software applications during Fall quarter and Winter Break - LibreOffice 7.2, Adobe Creative Cloud 2022, SPSS 28, TwinMotion 2021, Maya 2022, AutoCAD 2022, Blender 3 and DaVinci Resolve 17. In addition we made minor updates to other applications such as web browsers, Java, etc.
- CLM conducted a faculty survey about computer room use. The results are posted at [https://computerrooms.ucdavis.edu/pubs/survey/faculty\\_f21.html](https://computerrooms.ucdavis.edu/pubs/survey/faculty_f21.html). In general faculty were very pleased with the computer classrooms.

# Statistical Summary

## Utilization

### Overall computer room utilization

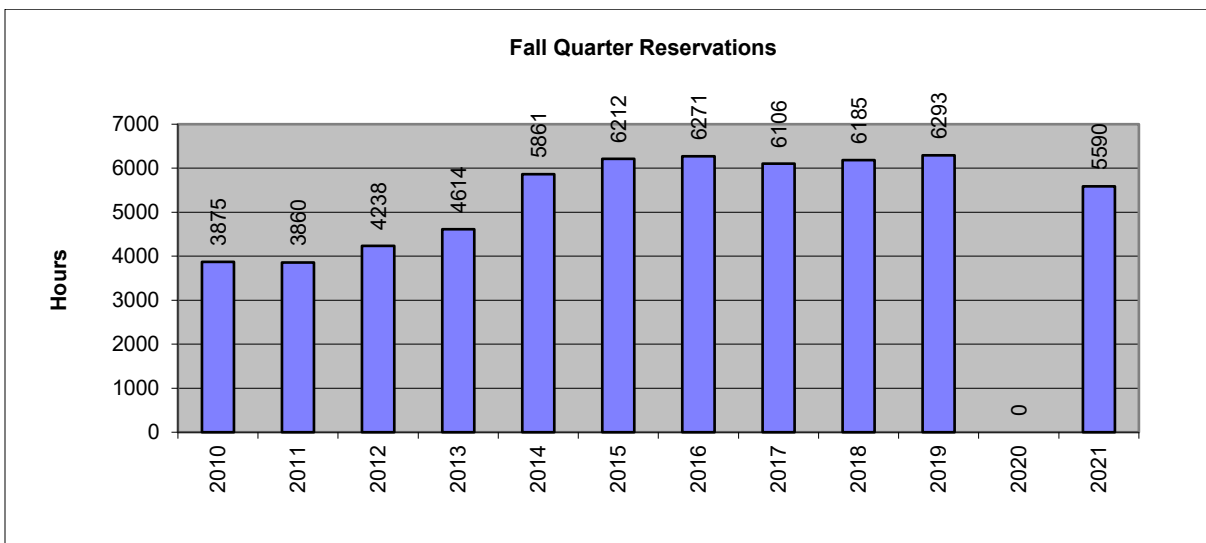
Computer Lab Management operates 20 computer rooms at UC Davis. These computer rooms experience high utilization during peak hours (10:00 am to 6:00 pm). The graph below shows average utilization for classrooms, open-access labs and all rooms for Monday through Thursday.



Classroom use is very high – averaging roughly 90% from 10am to 6pm. Open-access utilization is much lower. Fall 2021 saw the lowest open-access utilization in CLM history. Prior to the COVID pandemic it was slowly decreasing and the pandemic appears to greatly depressed use.

### Class Use

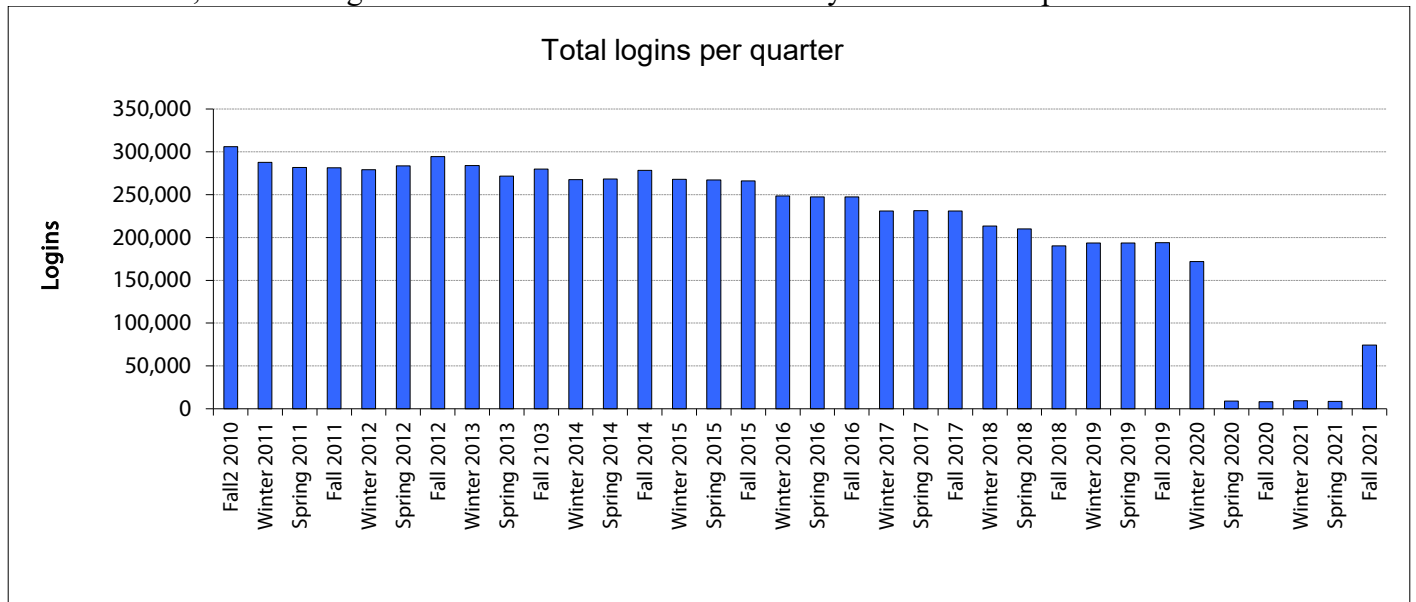
During Fall 2021 there were 5,590 class hours reserved in the computer classrooms. The class hours were originally much higher but there were 873 hours of cancellations, mostly due to COVID.



In addition, there were 188 class software installs and 26 class folders created during Fall 2021. Since most faculty have shifted to Canvas, CLM is no longer making class folder by default for UWP classes. Therefore the number of class folders per quarter has dropped dramatically.

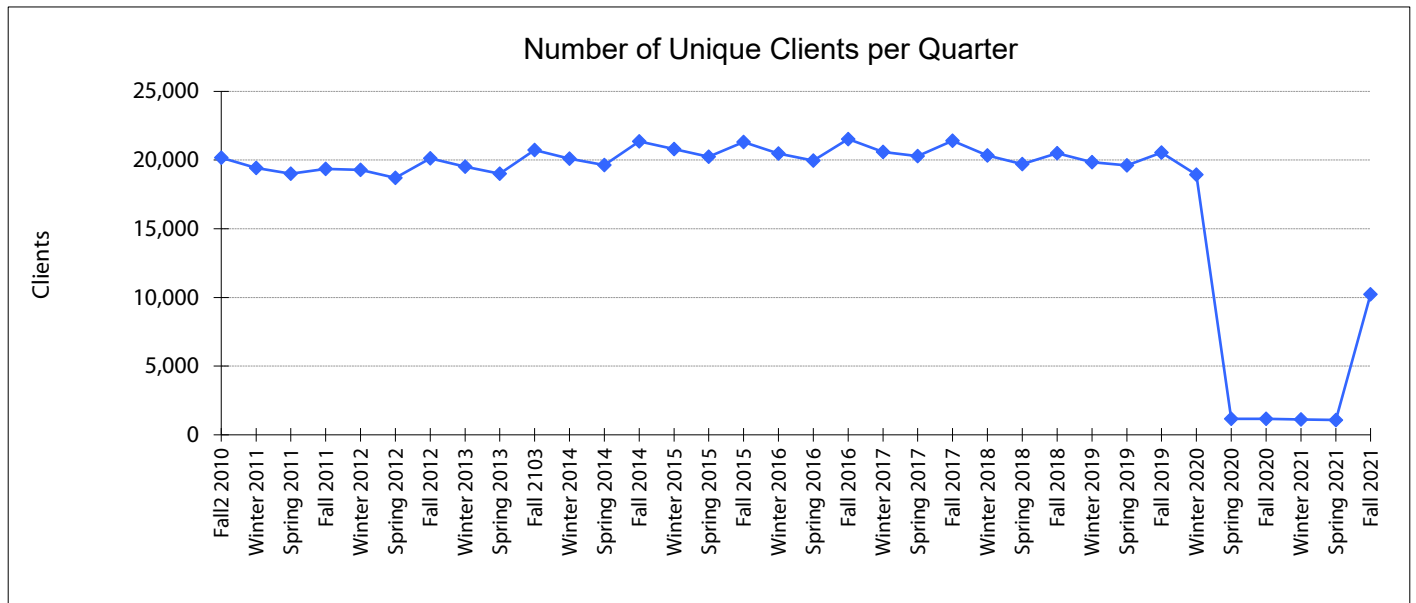
## Number of Logins

There were 74,505 total logins in Fall 2021. This is substantially lower than the pre-COVID numbers.



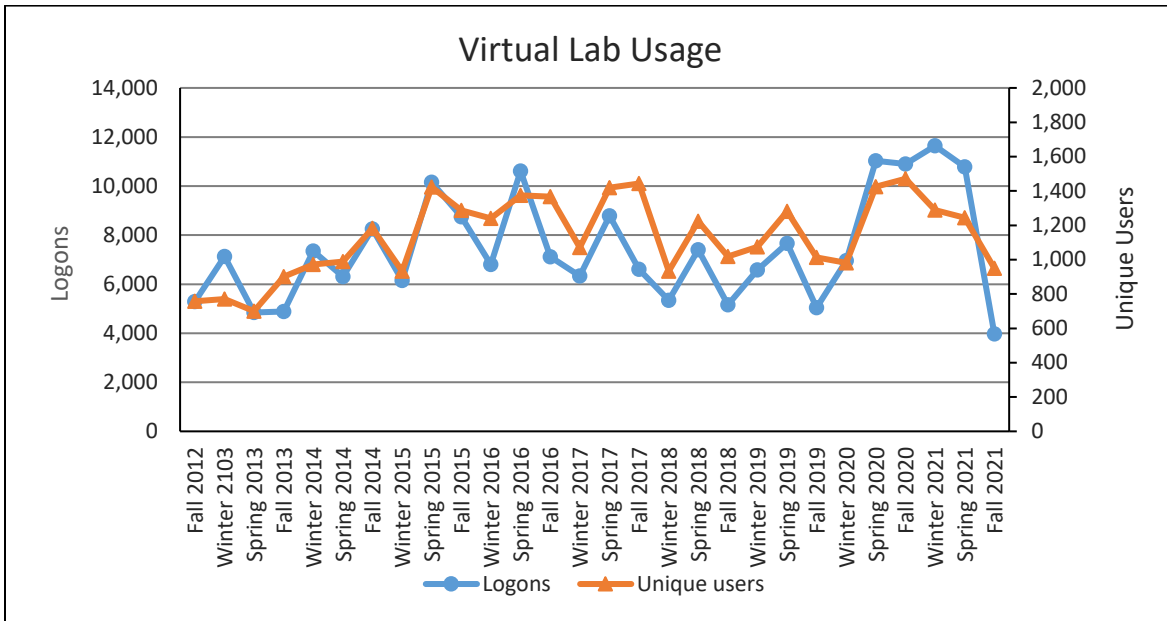
## Unique Users

The number of unique clients increased to 10,235 in Fall 2021 since campus reopened after the COVID closure. 9,974 (97.5%) of the unique clients were students.



## Virtual Lab Users

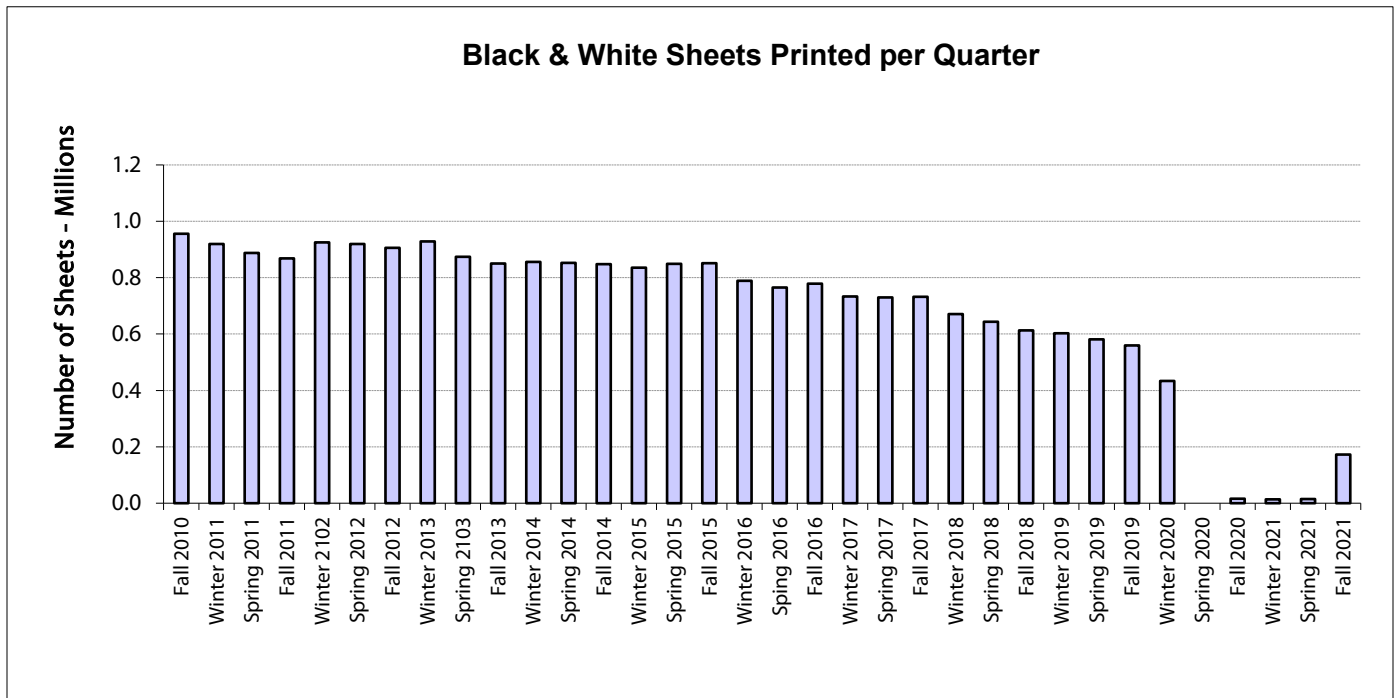
The IET Virtual Lab was used 3,974 times by 949 unique clients. Both are a large drop from the COVID pandemic level of use, which was expected since class sessions met in-person instead of in the Virtual Lab.



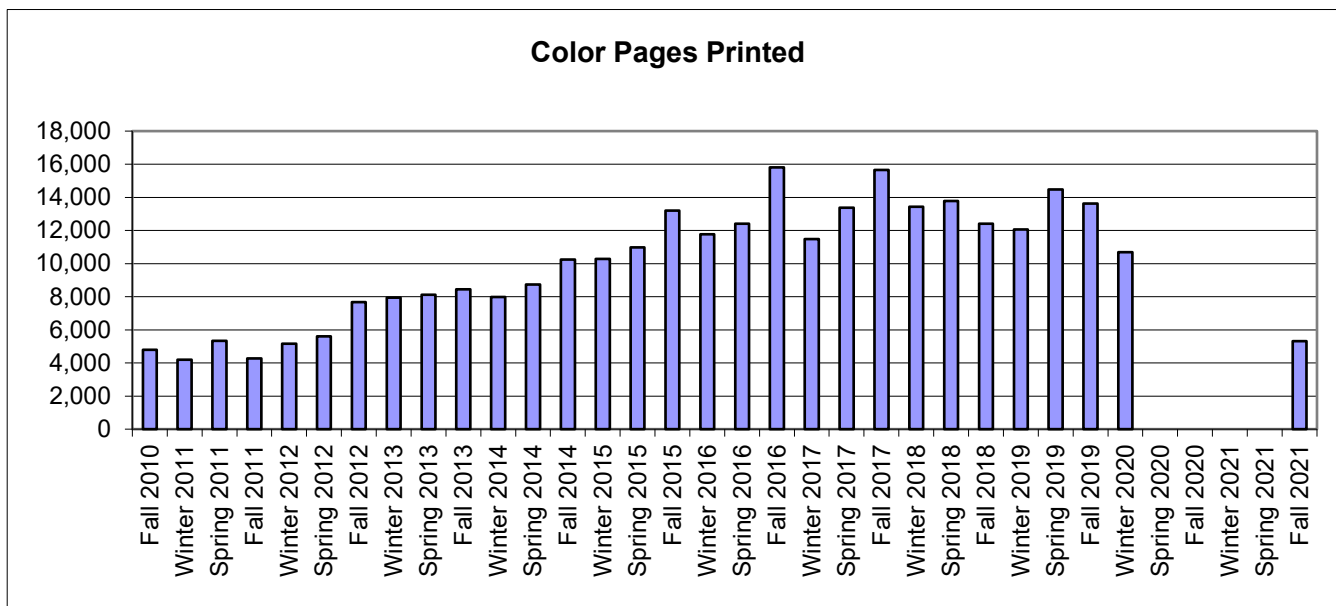
There were 1,502 denied connections to the virtual lab since there were no free stations. Most denied connections were during the day when there are only very limited number for computers available.

## Printing

The total sheets printed in Fall 2021 was 172,543. While this was obviously a large increase from the pandemic quarters, it is a 69% drop from Fall 2019.



There were 5,315 color pages printed.



There were 20,531 wireless print jobs, a huge increase from past use. There were 3,400 unique clients who printed through the wireless printing system. The increase is likely due to the self-serve wireless printing added to the MU Lounge and Shields Basement over Summer 2021.

