

Fall 2018 Quarterly Report

Computer Lab Management

Prepared by Tim Leamy

Computer Lab Management (CLM) operates 21 computer rooms across the UC Davis campus. These consist of 14 computer classrooms and 7 open access labs with a total of 644 installed stations. CLM also manages eight departmental computer rooms with 208 installed stations for the School of Education, the UC Davis Language Center, and The Arts Admin Group.

Some of the significant items from Fall 2018 include:

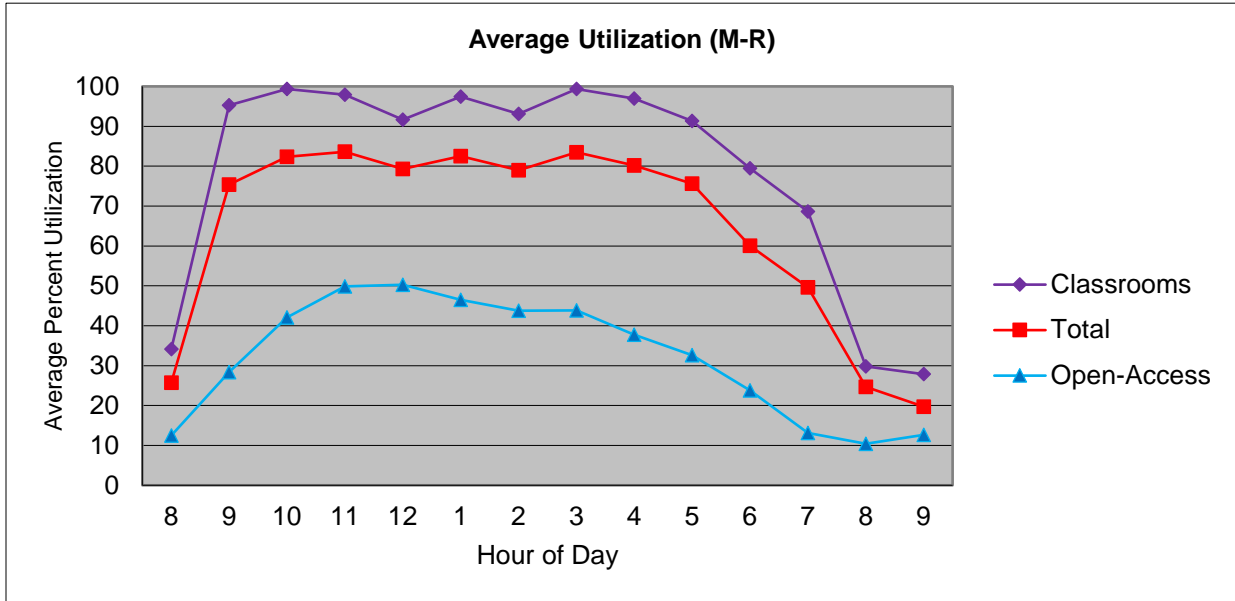
- During Fall 2018 there were 6,185 hours of instruction reserved in the computer classrooms. The number of class hours reserved has been fairly consistent over the past four years. The classrooms average roughly 43 hours of class per week, so there isn't much room for growth.
- Therefore, CLM is continuing to look for ways to add computer classrooms and the resources to support them. We are in early planning to open a new computer classroom in 0347 Storer later this year.
- Total logons and printing decreased substantially from Spring 2018. The large drops are mostly due to the campus closure Nov 13th to Nov 21st due to extremely bad air quality. Sixteen percent of the instructional days were lost so a large drop in usage stats is expected.
- CLM upgraded PCs in the Center for Accessible Technologies (163 Shields) to Windows 10
- CLM split the front row of lights in 73 Hutchison onto separate controls. The lighting change improved projection since turning off the front row made the projected image much easier to see.
- CLM conducted a faculty survey about computer room use. The results are posted at https://computerrooms.ucdavis.edu/pubs/survey/faculty_f18.html. In general faculty were very pleased with the computer classrooms.

Statistical Summary

Utilization

Overall computer room utilization

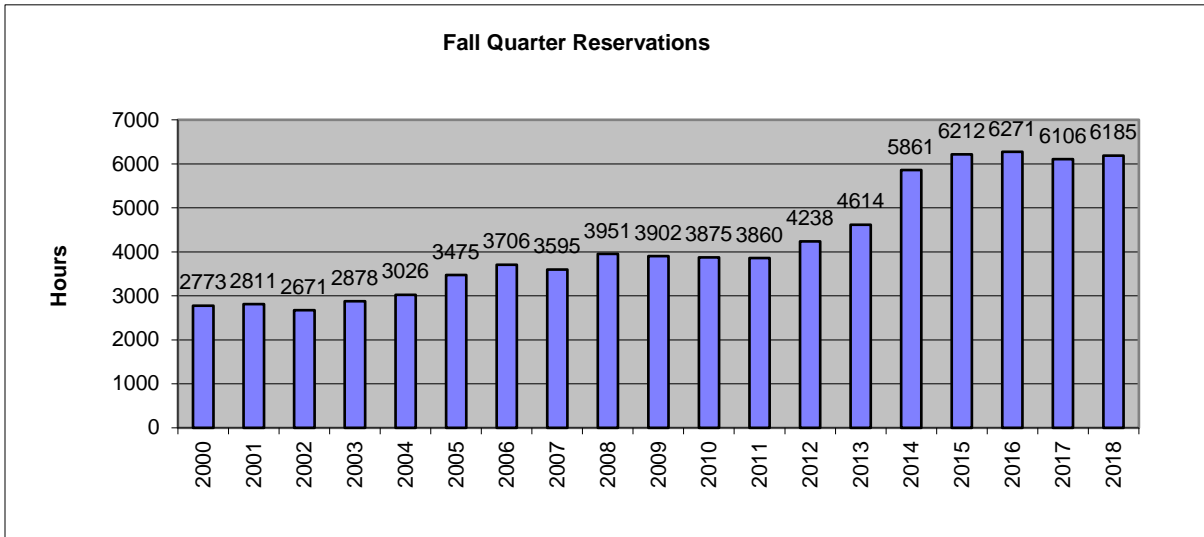
Computer Lab Management operates 21 computer rooms at UC Davis. These computer rooms experience high utilization during peak hours (9:00 am to 6:00 pm). The graph below shows average utilization for classrooms, open-access labs and all rooms for Monday through Thursday.



Classroom use is very high – averaging over 90% from 9am to 6pm. Open-access utilization is much lower.

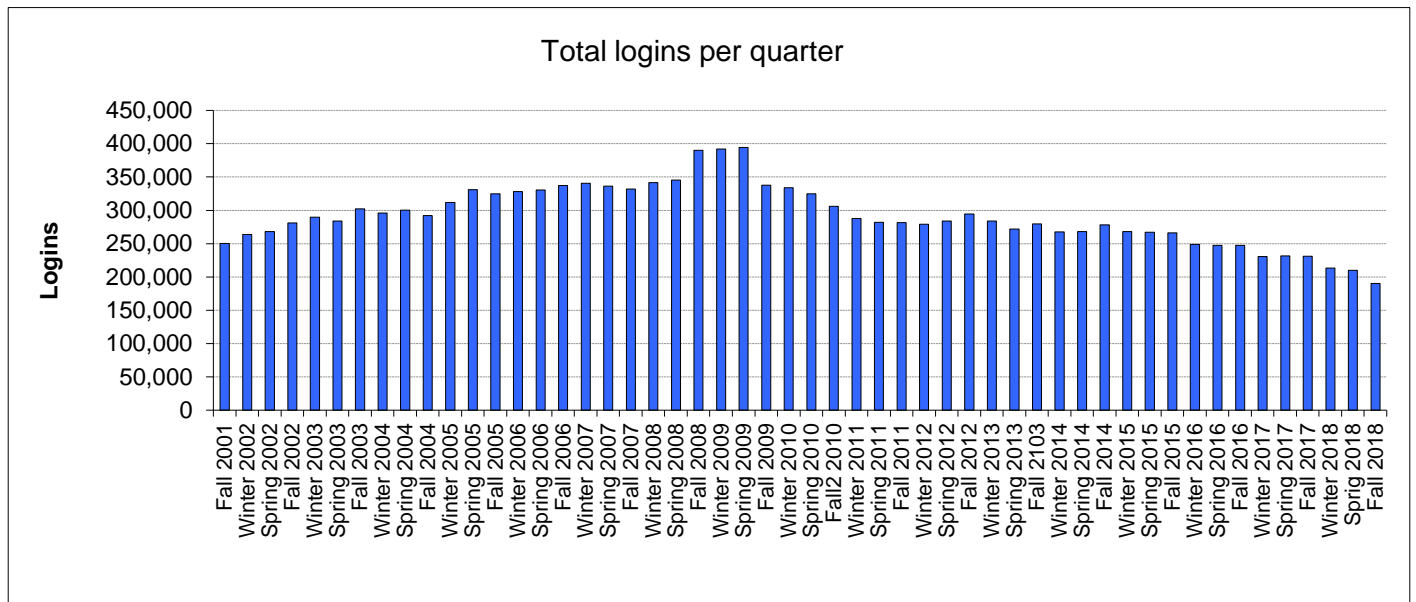
Class Use

During Fall 2018 there were 6,185 class hours reserved in the computer classrooms (a slight increase from Fall 2017). In addition, there were 222 class software installs and 163 class folders created during Fall 2018.



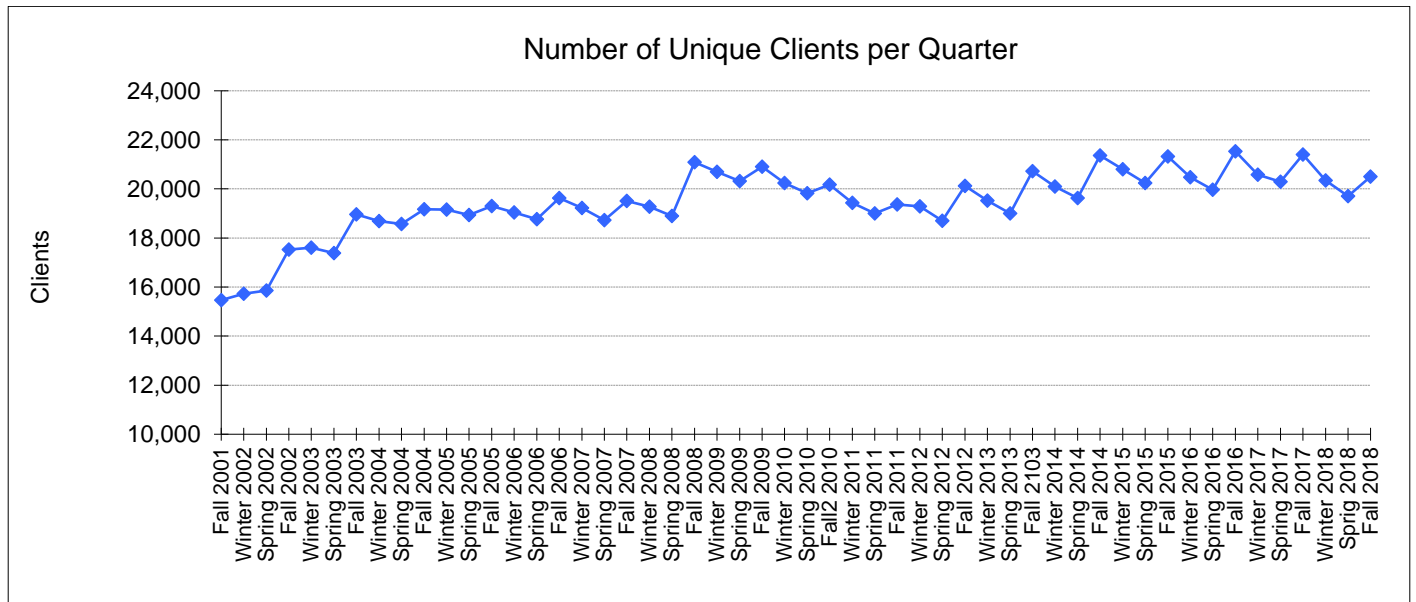
Number of Logins

The total logins in Fall 2018 were 190,153 (a large 9.5% drop from Spring 2018). The large drop is mostly due to the campus closure Nov 13th to Nov 21st due to extremely bad air quality. Logins dropped from roughly 4-5 thousand to 20-50 per day during that period.



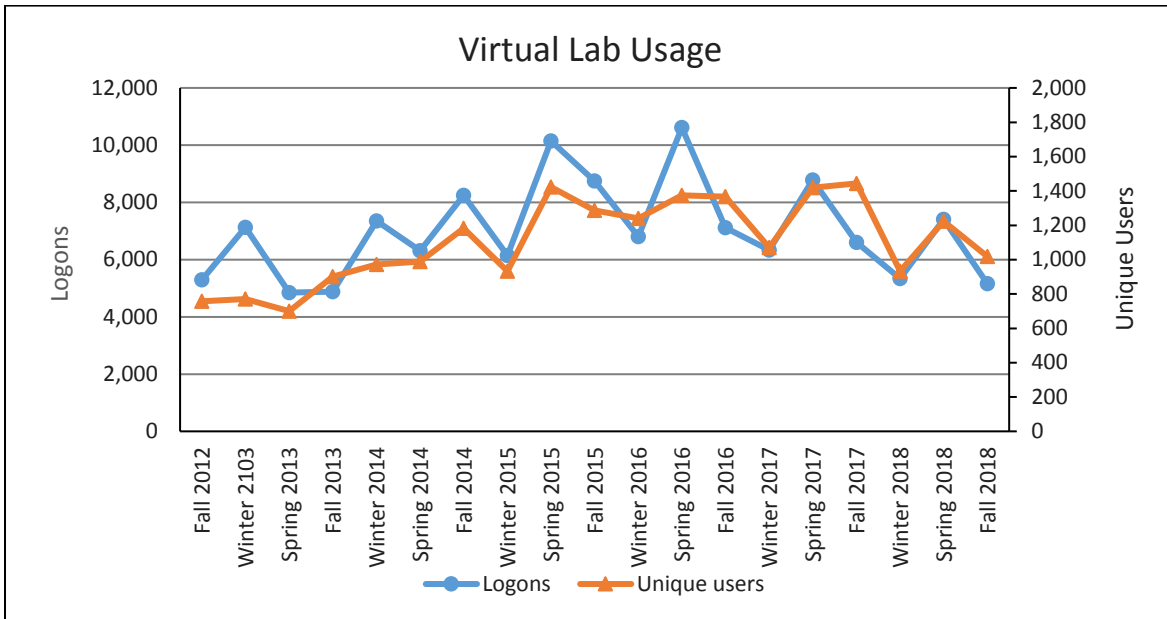
Unique Users

The number of unique clients increased to 20,495 in Fall 2018, which is an increase of 793 clients from Spring 2018. 20,059 (97.8%) of the unique clients were students.



Virtual Lab Users

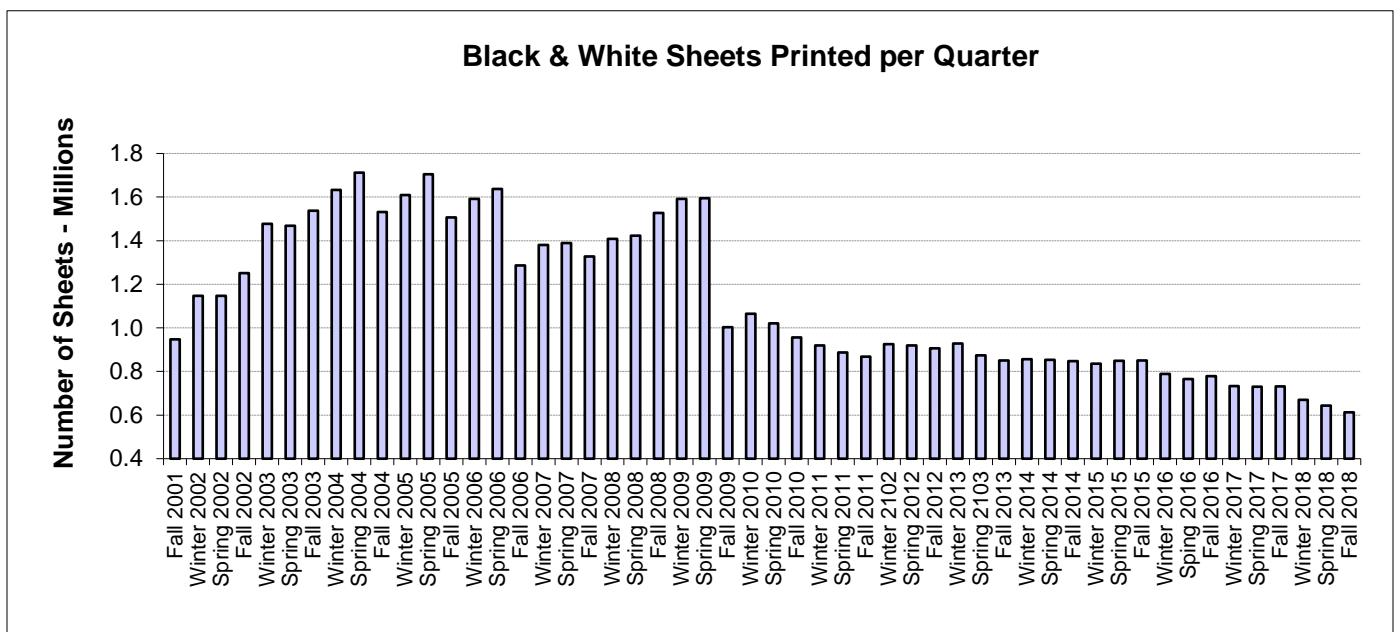
The IET Virtual Lab was used 5,159 times by 1,018 unique clients. Spring quarter typically has the highest number of Virtual Lab logons, so there was a drop of logons and unique users from Spring 2018.



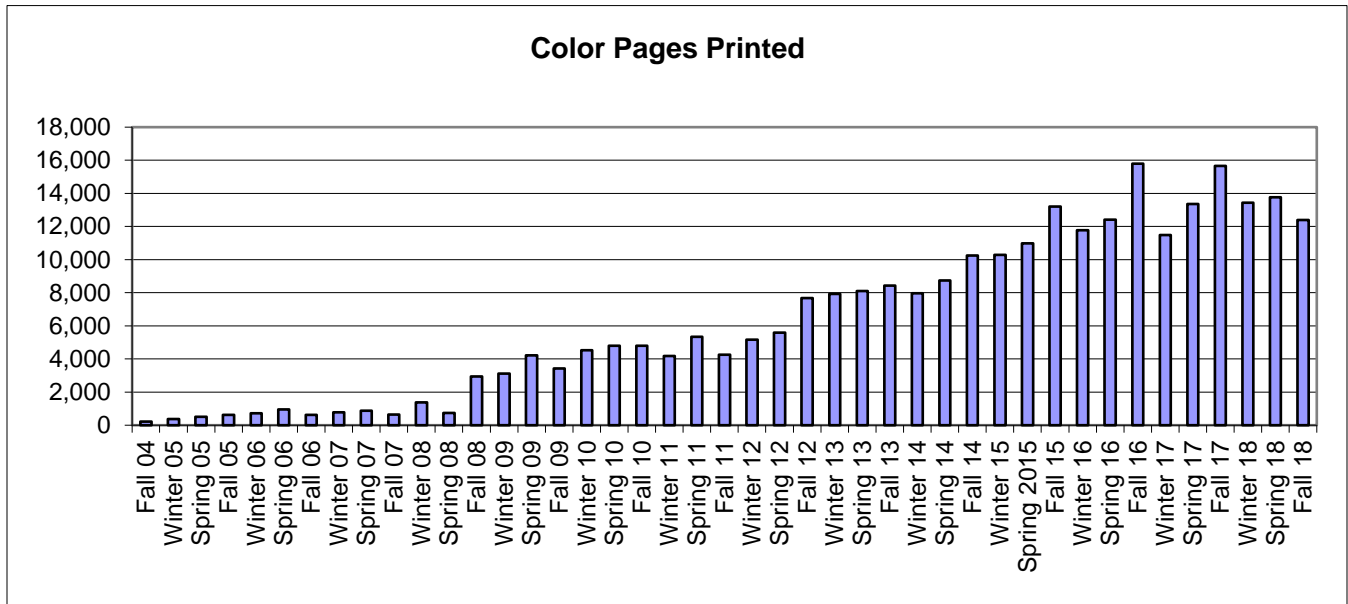
There were 284 denied connections to the virtual lab since there were no free stations. Most denied connections were during the day when there are only very limited number for computers available. The denied sessions dropped dramatically from Spring 2015 (5,572) since CLM made more stations available during the day.

Printing

The total sheets printed in Fall 2018 decreased y to 613,296 (a large 16.2 % drop from Spring 2018). The large drop is most likely due to the campus closure Nov 13th to Nov 21st due to extremely bad air quality. The average sheets printed per client (of those who printed) was 35.86. The number of sheets printed per quarter dropped dramatically from 08-09 levels due to a new printing rate implemented in Fall 2009.



There were 12,398 color pages printed, a decrease of 10% from Spring 2018.



There were 5,210 wireless print jobs, an increase of 473 from Spring 2018. There were 675 unique clients who printed through the wireless printing system.

