

Fall 2011 Quarterly Report

Computer Lab Management

Prepared by Tim Leamy

Computer Lab Management (CLM) operates 17 computer rooms across the UC Davis campus. These consist of 11 computer classrooms and 6 open access labs with a total of 537 installed stations.

As faculty continue to incorporate computerized exercises into their curriculum, they require more access to computer classrooms to enable their instruction. To support this growing demand, CLM's challenges continue to be acquiring additional space for computer classrooms and redesigning our existing rooms to accommodate more students.

Some of the significant items from Fall 2011 include:

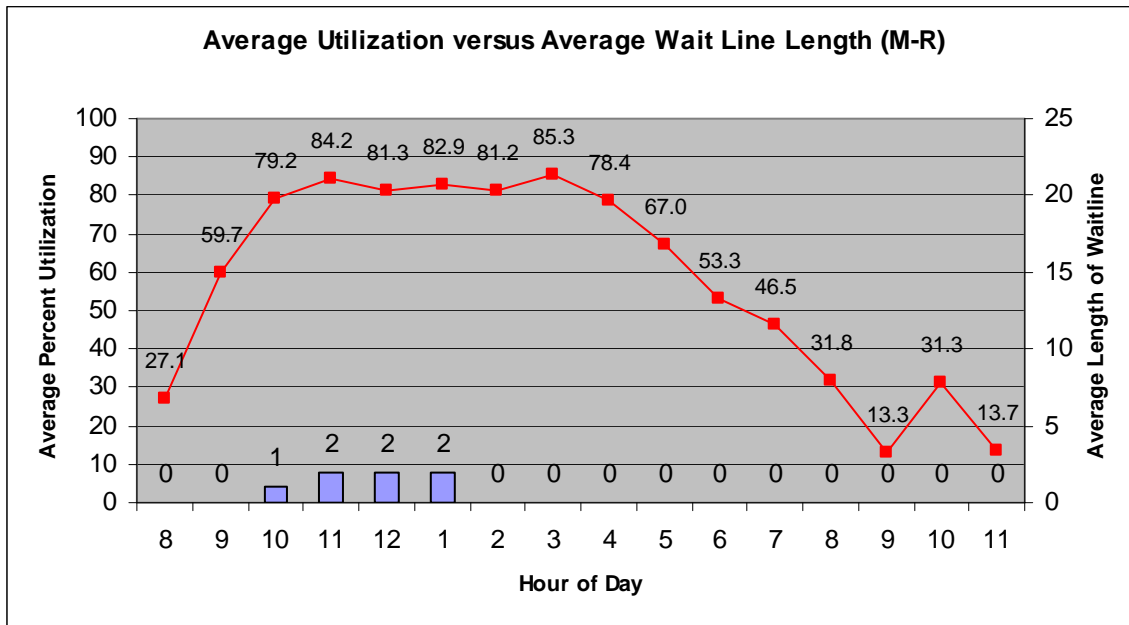
- During Winter Break CLM moved the IET Media Lab, computer classroom and open-access lab located in Hart Hall to the new Student Community Center (SCC). The SCC is located across the street from Chem 194 at the corner of California Ave and Hutchison Dr. This move allowed us to update our services to add an additional computer classroom and create a more functional setup for the IET Media Lab. The new rooms in the SCC will provide:
 - Two 24 seat computer classrooms. The classrooms are divided by a partition and can be combined to create a 48 seat classroom.
 - The IET Media Lab, which provides access to media equipment and software for students, staff and faculty to create their own projects utilizing scanner, video, audio, and general media computer stations.
 - Open-Access stations to provide drop-in computer use.
 - A wireless printing location (<http://wirelessprinting.ucdavis.edu/>).
- CLM began detailed planning to move the computer classroom from 1131 Meyer to Hutchison Hall over Summer 2012. ATS and ARM developed a space plan which backfilled vacated space in Hutchison, allowed CLM to consolidate functions from Meyer to core campus, and found office space to ITPS and SLC. This consolidation will allow a saving in student salaries while preserving a similar level of service for our clients.
- The total logins and sheets printed remained almost constant (within 2%) from Spring 2011, but are substantially lower than the 08-09 school year. The printing rate increase in Fall 2009 appears to have caused a large decrease in student use of the computer rooms. The decrease in open lab hours likely also contributed to the decrease. We hope that the sheets printed will rebound as students become accustomed to the new rate and realize that printing is still relatively inexpensive.
- Computer classroom reservations have stayed relatively constant since the 08-09 school year. The computer classrooms are reserved on average about 35 hours per week, which is the realistic maximum since most faculty try to avoid teaching in the early morning, evening, and Friday afternoon times.
- CLM conducted a faculty survey about computer room use. The results are posted at http://clm.ucdavis.edu/pubs/survey/faculty_f11.html.

Statistical Summary

Utilization

Overall computer room utilization

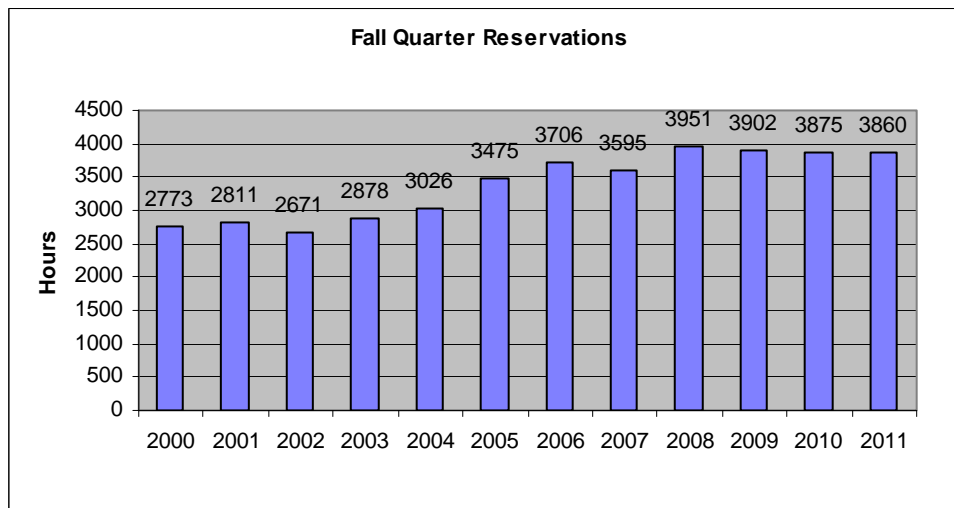
Computer Lab Management operates 17 computer rooms at UC Davis. These computer rooms experience high utilization during peak hours (10:00 am to 5:00 pm). Several of the open access labs also experience wait lines. The graph below combines utilization Monday through Thursday.



Utilization shows the general trend of high usage from 10am to 5pm continued this quarter. The average wait lines in Fall 2011 were quite a bit lower than the 08-09 school year. This is likely caused to the decreased demand due to the printing rate change. The wait line data in the graph is the average wait line for the entire quarter. The maximum wait line length of 33 on October 7th is many times the average.

Class Use

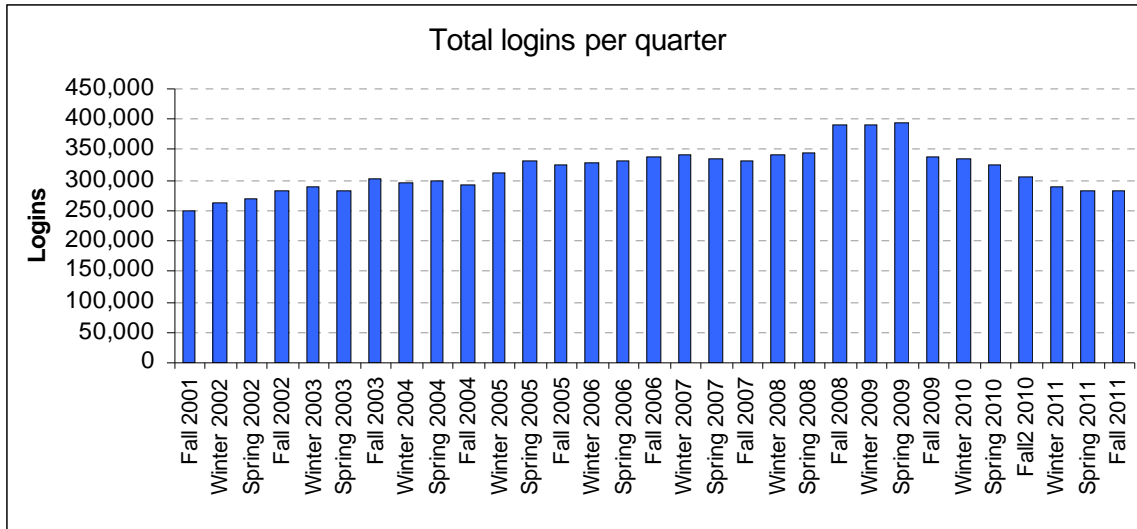
During Fall 2011 there were 3,859.5 class hours reserved in the computer classrooms. The computer classroom usage decreased slightly from Fall 2010, but has been relatively flat for the last few years.



In addition, there were 140 class software installs and 79 class folders created during Fall 2011.

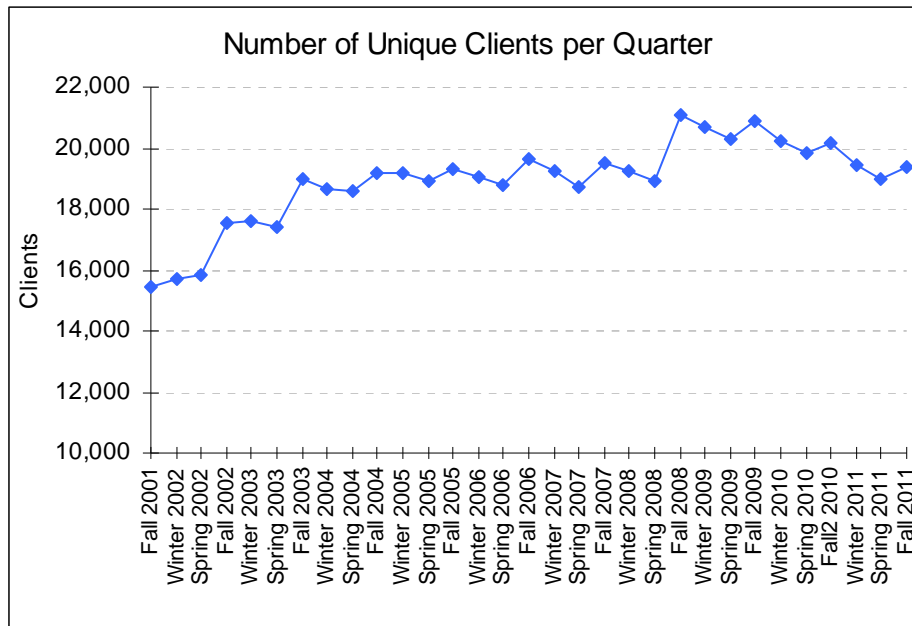
Number of Logins and Users

The total logins in Fall 2011 remained roughly constant at 281,309. This is a large decrease from the 08-09 average of 392,096. The decrease is likely caused by the decreased demand due to the printing rate change and the reduction of open hours.



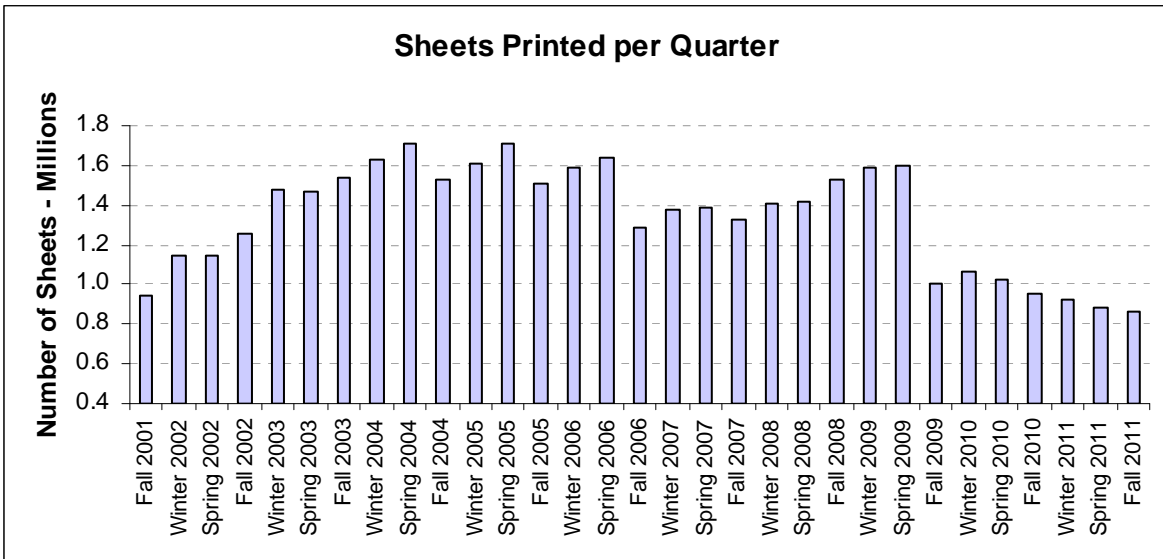
Unique Users

The number of unique clients increased to 19,361 in Fall 2011. This is an increase of 364 clients from Spring 2011. 18,900 of the unique clients were students.

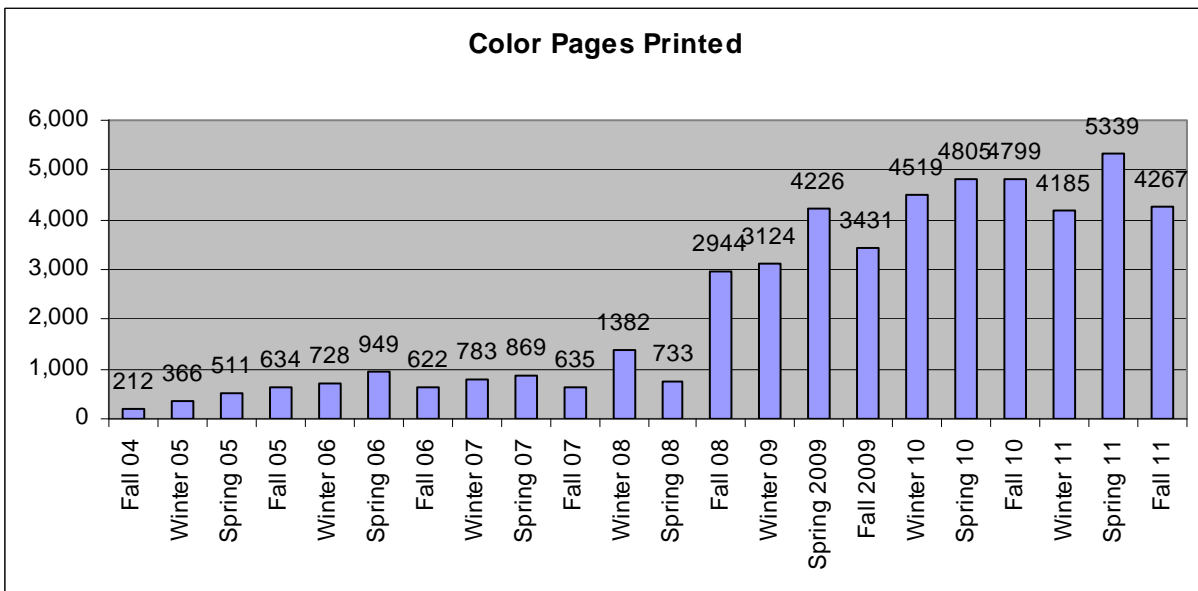


Printing

The total sheets printed in Fall 2011 decreased to 868,264. The average sheets printed per client (of those who printed) was 53.5. The number of sheets printed per quarter dropped dramatically from 08-09 levels due to a new printing rate implemented in Fall 2009.



There were 4,267 color pages printed.



There were 1,429 wireless print jobs, a decrease of 226 from Spring 2010. There were 225 unique clients who printed through the wireless printing system. The drop in wireless printing usage mirrors the overall drop in printing due to the new printing rates in Fall 2009.

